

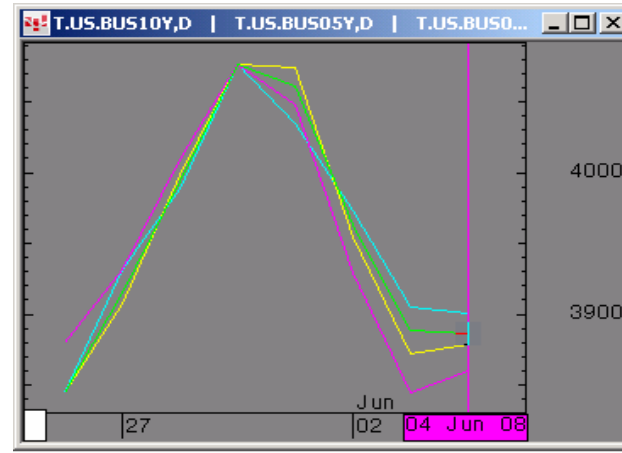


The Morning Email: Treasuries

Table of Contents

- Pg 1 Important Econ Releases, Highs & Lows
- Pg 2 Quotes
- Pg 3 Duration, DV01s, Curve Spreads, CF
- Pg 4 Hedge Ratio's
- Pg 5 Closes: 2pm CT vs this Morning
- Pg 6 Cash Duration Matrix
- Pg 7 Tic for Tic & Box for Box Matrix
- Pg 8 Key Money Rate, Spreads, Swaps, Packs
- Pg 9 Libor, Fed Funds (OIS), Repo, SONIA & EONIA Rates

Daily Yield Curve



} Scale is for 10yr

Source: CQG, Inc. © 2008 Wed Jun 04 2008 05:46:35



Want something added? Let me know: jgoulding@ghco.com

Disclaimer: All information within this newsletter is meant for internal use at GH Trader's LLC, only. All information has been recorded to the best of my ability. Th material is based upon information that I consider reliable, but I do not represent that it is accurate or complete.

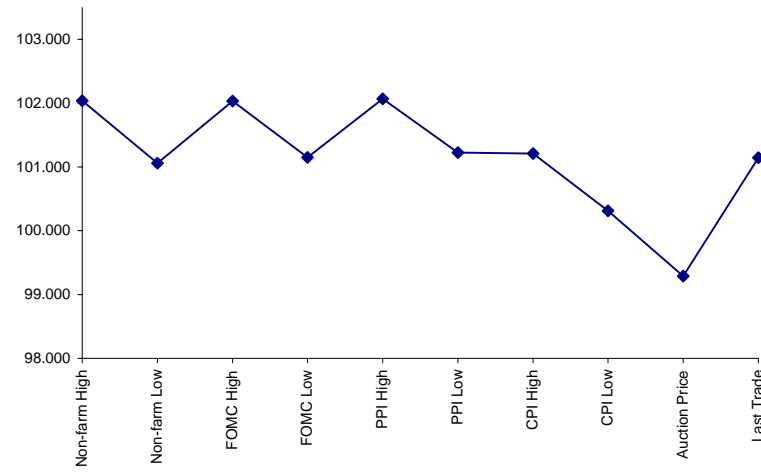
Economic Releases (32nds)

	5y	10y	ZNU8	ZBU8	Date
Non-farm High	102.0350	101.070	114.147	116.232	5/2/2008
Non-farm Low	101.0600	99.270	112.211	114.277	5/2/2008
FOMC High	102.0300	100.275	113.233	115.352	4/20/2008
FOMC Low	101.1500	100.020	112.241	114.267	4/20/2008
PPI High	102.0650	100.265	113.246	116.147	5/20/2008
PPI Low	101.2250	100.060	113.166	115.167	5/20/2008
CPI High	101.2100	100.050	113.167	115.197	5/14/2008
CPI Low	100.3100	99.055	112.177	114.087	5/14/2008
Auction Price	99.2908	99.157	na	na	
Last Trade	101.1420	99.285	114.060	115.005	6/4/2008 5:46

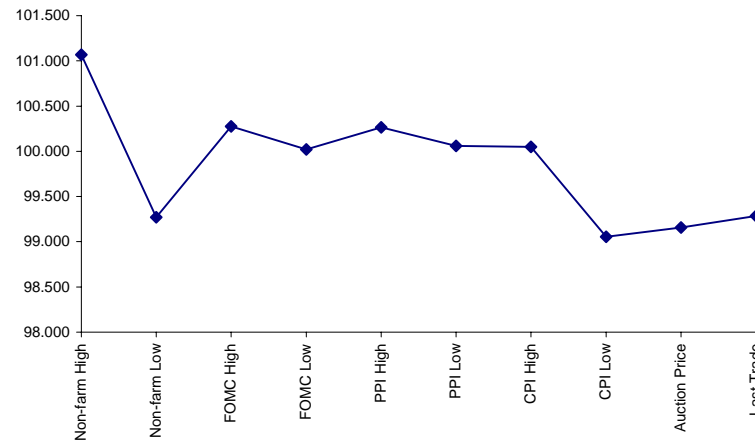
Auctions - 32nds

	2 y	5y	10y	30y
Auction Price	99.311	99.291	99.157	96.120
Auction Yield Stop	2.64	3.52	3.937	4.599
Actual Auction Date	5/28/2008	5/29/2008	5/7/2008	5/8/2008 r

5y (Decimal)



10y (Decimal)



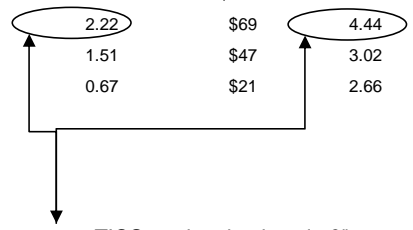
Notes:

- 1) Cash and futures are adjusted for roll.
- 2) Release times are from release to 2pm cdt
- 3) {Jun08 to Sep08 Futures roll: ZF = (-27 3/4); ZN = (-49 1/2); ZB = (-30 1/2) [tics]}

Quotes

		32 nds					
	Last	Net	High	Low	Open	Volume	Sym Name
TUAU8	105.242	(0.007)	105.257	105.212	105.252	37,435	2y Fut
FVAU8	111.015	0.002	111.030	110.275	111.017	78,629	5y Fut
TYAU8	114.060	0.015	114.075	113.275	114.045	165,212	10y Fut
USAU8	115.005	0.01	115.025	114.200	114.295	21,009	30y Fut
	Last	Net	High	Low	Open	Volume	Sym Name
BUS02P	100.127	(0.010)	100.135	100.097	100.132	na	2y Cash
BUS05P	101.140	(0.005)	101.152	101.082	101.140	na	5y Cash
BUS10P	99.285	0.005	99.290	99.195	99.270	na	10y Cash
BUS30P	96.025	(0.005)	96.030	95.230	95.300	na	30y Cash
	Last	Net	High	Low	Open	Volume	Sym Name
BUS02Y	2.415	0.020	2.476	2.375	2.431	na	2y Yield
BUS05Y	3.183	0.009	3.229	3.174	3.196	na	5y Yield
BUS10Y	3.886	(0.002)	3.926	3.884	3.902	na	10y Yield
BUS30Y	4.616	(0.004)	4.646	4.613	4.626	na	30y Yield

	M Duration	DV01 32	DV01 \$	DV01 Box	CF	
30y	16.03	5.00	\$1,562	10.00	n/a	30y
10y	8.17	2.62	\$818	5.23	n/a	10y
5y	4.55	1.51	\$471	6.02	n/a	5y
2y	1.92	0.62	\$193	2.47	n/a	2y
ZB	10.34	3.92	\$123	3.92	0.7771	ZB
ZN	6.01	2.22	\$69	4.44	0.8478	ZN
ZF	4.14	1.51	\$47	3.02	0.8995	ZF
ZT	1.92	0.67	\$21	2.66	0.9397	ZT



DV01 32, said differently, is "how many TICS are in a basis point?".

Example, If ZN moves 1~basis point, then, it's moved 2.59 tics (Today, 03/29/08, the value in the box is 2.59).

Since ZN trades in half tics, then, 5.17 boxes = 1 basis point in ZN. (Again, today, 03/28/08, the value in the box is 5.17). Of course the values will be different as you look at this. But, they won't be that much different. So, I think you can get the idea I'm trying to get across.

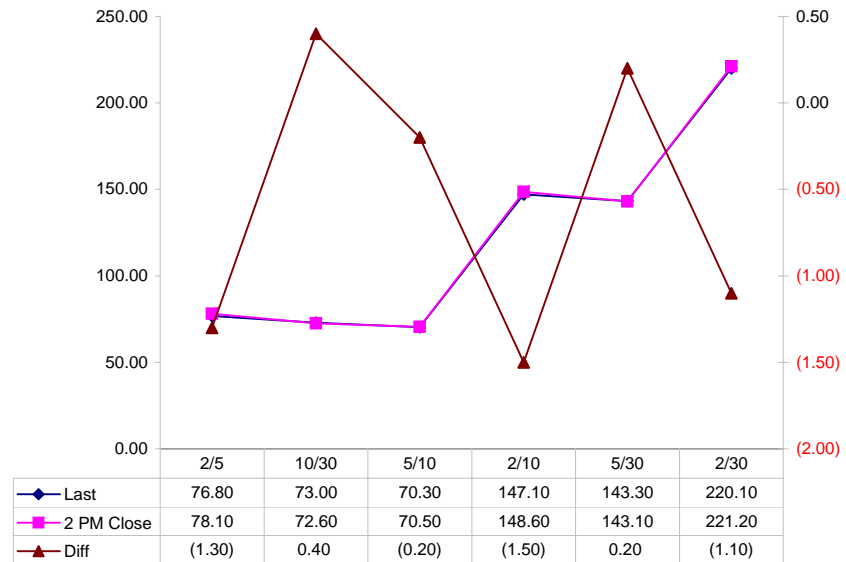
Notes

- CF = Conversion Factor
- MDuration = Modified Macaulay Duration
- MDuration & DV01s for Futures are based on proxy issue (CTD)
- DV01 Box = Dollar Value of 1 basis point move per Box

Yield Curve Spreads

	Last	2pm close	Diff
2/5	76.80	78.10	(1.30)
10/30	73.00	72.60	0.40
5/10	70.30	70.50	(0.20)
2/10	147.10	148.60	(1.50)
5/30	143.30	143.10	0.20
2/30	220.10	221.20	(1.10)

Curve Spreads vs 2pm close



US Financial Futures / Eurex Bond

	ZB	ZN	ZF	ZT
Bund (M)	1.033	1.818	2.700	2.983
Bobl (M)	0.563	0.990	1.476	1.626
Shatz (M)	0.224	0.393	0.586	0.646

US Financial Futures

	ZB	ZN	ZF	ZT
ZB		1.766	2.597	2.950
ZN	0.566		1.471	1.670
ZF	0.385	0.680		1.136
ZT	0.339	0.599	0.881	

Eurex Bonds

	Bund (H)	Bobl (H)	Shatz (H)
Bund (H)		1.8	4.6
Bobl (H)	0.5		2.5
Shatz (H)	0.2	0.4	

US Treasuries v US Financial Futures

	2y	5y	10y	30y
ZB	1.58	3.84	6.42	12.74
ZN	2.78	6.78	11.34	22.50
ZF	4.10	9.97	16.67	33.09
ZT	4.65	11.32	18.93	37.58

US Treasuries v Eurex Bonds

	2y	5y	10y	30y
Bund (M)	1.5	3.6	6.5	12.2
Bobl (M)	2.8	6.5	11.9	22.4
Shatz (M)	7.2	16.0	29.8	56.3

US Treasuries

	2y	5y	10y	30y
2y		2.434	4.071	8.079
5y	0.427		1.740	3.453
10y	0.246	0.598		1.985
30y	0.124	0.301	0.504	

Note: If you are looking at a matrix with Eurex products then those ratios are pulled from Bloomberg and are static. Meaning, I only update them once in a while but always on rolls. I calculate the other matrixes, with US products, everyday

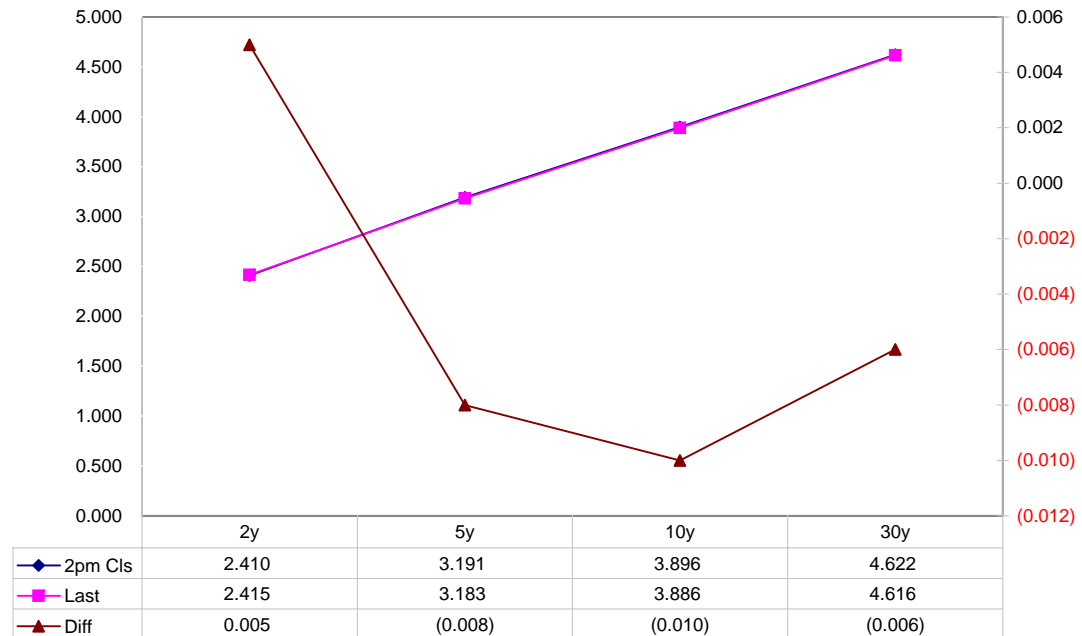
Closes: 2pm CT vs this Morning

	Cpn	Mty	Close 32	Close	Last	Diff	Basis			Close 32	Last	
							Close	Last	Roll			
2y	2.625	5/31/10	100.1325	2.410	2.415	0.005	32.567	32.567		105.2500	105.2420	TUAU8
5y	3.500	5/31/13	101.1325	3.191	3.183	(0.008)	49.10	49.83		111.0125	111.0150	FVAU8
10y	3.875	5/15/18	99.265	3.896	3.886	(0.010)	97.91	98.64		114.045	114.060	TYAU8
30y	4.375	5/15/37	96.010	4.622	4.616	(0.006)	213.66	214.88		114.315	115.005	USAU8

Curve Spreads

	Close bps	Last bps
2/5	78.1	76.8
5/10	70.5	70.3
10/30	72.6	73.0
2/10	148.6	147.1
5/30	143.1	143.3
2/30	221.2	220.1

US Treasuries Last v 2pm Close



Notes:

Basis = (Cash Decimal - (Futures Decimal * CF))*32

MDuration for Curve Spreads:

Longer duration minus shorter duration

32 = price is quoted in 32nds

Cash Duration Matrix

	2	5	10	30
2	100%			
5	42%	100%		
10	24%	56%	100%	
30	12%	28%	51%	100%

What is this? (1):
 2yr cash has X% duration of 5yr cash .

Cash Matrix [DV01 x Duration]

	2	5	10	30
2	\$193			
5	\$199	\$471		
10	\$193	\$455	\$818	
30	\$187	\$443	\$796	\$1,562

What is this? (2):
 - 2yr cash has DV01 of X\$
 - Multiply the 2yr DV01 by the percent duration to come up with what the 2yrs DV01 SHOULD be compared to the 5yr.

Cash Matrix [DV01 over / (under) valued]

	2	5	10	30
2				
5	(\$6)			
10	\$1	\$15		
30	\$6	\$28	\$22	

What is this? (3):
 - Now you can see the over/under value, based on the DV01, from contract to contract. In this example we are looking at the 2yr compared to the 5yr.

Cash Matrix [DV01 over / (under) as %]

	2	5	10	30
2				
5	-2.94%			
10	0.33%	3.37%		
30	3.12%	6.24%	2.77%	

Or you can look at the over/under value as a percentage instead of dollar terms.

Tic for Tic Matrix

	2y	5y	10y	30y
ZT	0.93	2.26	3.93	7.52
ZF	0.41	1.00	1.73	3.31
ZN	0.28	0.68	1.18	2.25
ZB	0.16	0.38	0.67	1.27

	2y	5y	10y	30y
2y		2.43	4.23	8.08
5y	0.41		1.74	3.32
10y	0.24	0.58		1.91
30y	0.12	0.30	0.52	

	ZT	ZF	ZN	ZB
ZT		2.27	3.34	5.90
ZF	0.44		1.47	2.60
ZN	0.30	0.68		1.77
ZB	0.17	0.39	0.57	

Box for Box Matrix

	2y	5y	10y	30y
ZT	0.93	2.26	7.87	15.03
ZF	0.41	1.00	3.46	6.62
ZN	0.56	1.36	1.18	2.25
ZB	0.63	0.77	1.33	1.27

	2y	5y	10y	30y
2y		2.43	2.11	4.04
5y	0.41		0.43	1.66
10y	0.47	2.30		1.91
30y	0.25	0.60	0.52	

	ZT	ZF	ZN	ZB
ZT		2.27	6.68	11.80
ZF	0.44		1.47	5.19
ZN	0.15	0.68		1.77
ZB	0.08	0.19	0.57	

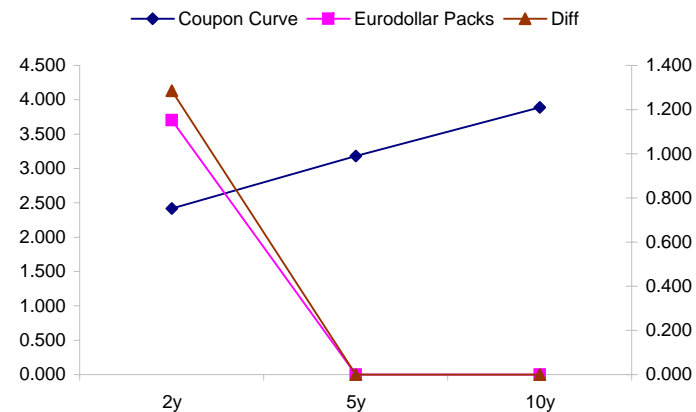
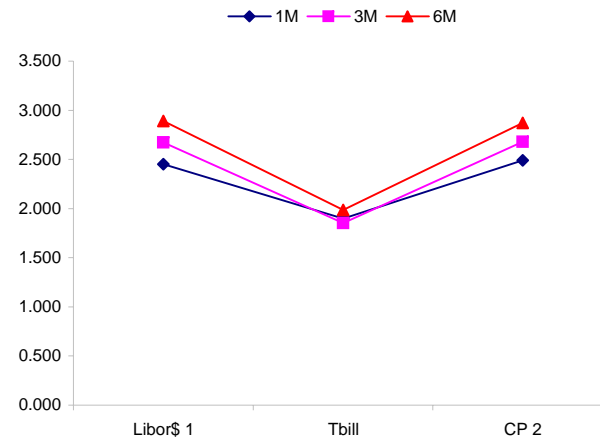
	Libor\$ ¹	Repo Rt ⁶			
0/N	2.216	#VALUE!			
1week	2.383	#VALUE!			
2week	2.415	#VALUE!			
	Libor\$ ¹	Tbill	CP ²		
1M	2.450	1.899	2.490		
3M	2.672	1.853	2.680		
6M	2.891	1.986	2.870		
	TSY	Swp	Swp Rate ⁵	ED Pks ³	TSY - ED Pk ⁴
2y	2.418	84.25	3.26	3.704	1.286
5y	3.182	82.25	4.00		#VALUE!
10y	3.888	65.25	4.54		#VALUE!

<u>2/5</u>	<u>Rd/Blu Pk</u>	<u>Diff</u>	
76.4	#VALUE!	#VALUE!	Red pack / Blue pack is a 2/5 proxy
<u>2/10</u>	<u>Rd/Gld Pk</u>	<u>Diff</u>	
147.0	#VALUE!	#VALUE!	Red pack / Gold pack is a 2/10 proxy
			Blue pack / Gold pack is a 5/10 proxy
<u>5/10</u>	<u>Blu/Gld Pk</u>	<u>Diff</u>	
70.6	#VALUE!	#VALUE!	

"Swap spreads are essentially a measure of the difference between buying a safe government bond and making a riskier loan to a bank"
--WSJ

Notes:

- 1) Quoted in US Dollars
- 2) CP = Commercial Paper
- 3) ED Pks are colored for pack identifications. Example, the red pack is a 2-yr proxy and is colored red.
- 4) TSY yield minus ED Pk yield
- 5) Swap divided by 100 + TSY yield gives swap rate in basis points.
- 6) Repo Rt quotes is for overnight General Collateral



	Last	Chng	Term	Asset Type
USDLIBON	2.216	(0.0838)	Overnight	LIBOR
TUSFFRON	#VALUE!	#VALUE!	Overnight	Fed Funds Effective Rate
TUSRPOON	#VALUE!	#VALUE!	Overnight	Repo Rate
TEONIA01M	4.014	(0.0100)	1 month	Euribor OIS Rate
TEONIA03M	4.070	(0.0080)	3 month	Euribor OIS Rate
TSONIA01M	5.042	(0.0030)	1 month	Sterling OIS Rate
TSONIA03M	5.072	(0.0030)	3 month	Sterling OIS Rate
TUSOIS01M	2.004	(0.0040)	1 month	USD OIS Rate
TUSOIS03M	1.999	0.0000	3 month	USD OIS Rate

