

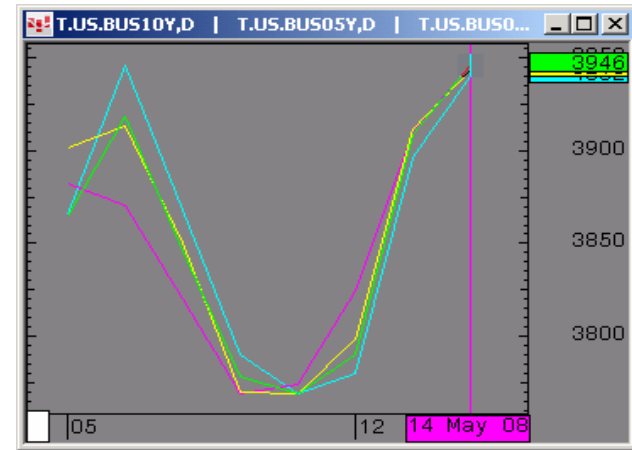


The Morning Email: Treasuries

Table of Contents

- Pg 1 Important Econ Releases, Highs & Lows
- Pg 2 Quotes
- Pg 3 Duration, DV01s, Curve Spreads, CF
- Pg 4 Hedge Ratio's
- Pg 5 Closes: 2pm CT vs this Morning
- Pg 6 Cash Duration Matrix
- Pg 7 Tic for Tic & Box for Box Matrix
- Pg 8 Key Money Rate, Spreads, Swaps, Packs
- Pg 9 Libor, Fed Funds, Repo, SONIA & EONIA Rates

Daily Yield Curve



Scale is for 10yr

Source: CQG, Inc. © 2008 Wed May 14 2008 05:40:51



Want something added? Let me know: jgoulding@ghco.com

Disclaimer: All information within this newsletter is meant for internal use at GH Trader's LLC, only. All information has been recorded to the best of my ability. This material is based upon information that I consider reliable, but I do not represent that it is accurate or complete.

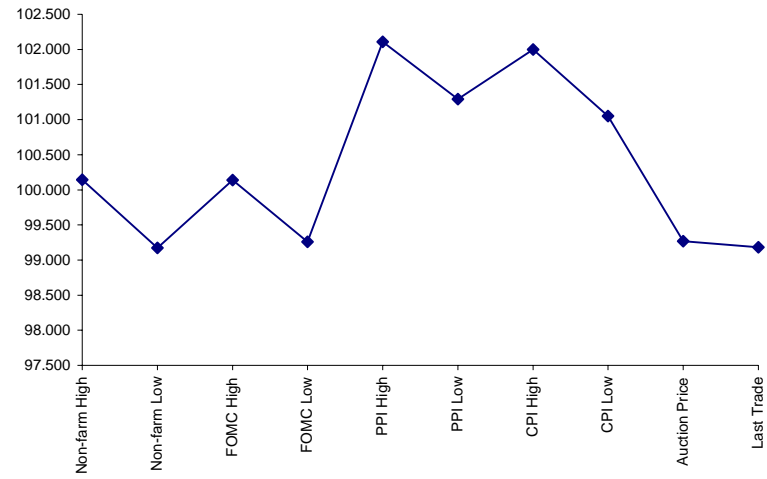
Economic Releases (32nds)

	5y	10y	ZNM8	ZBM8	Date
Non-farm High	100.1425	101.070	116.005	117.185	5/2/2008
Non-farm Low	99.1750	99.270	114.205	115.230	5/2/2008
FOMC High	100.1375	100.275	115.275	116.305	4/20/2008
FOMC Low	99.2600	100.020	114.300	115.220	4/20/2008
PPI High	102.1100	103.010	117.285	119.110	4/15/2008
PPI Low	101.2900	102.090	117.075	118.010	4/15/2008
CPI High	102.0000	102.145	117.145	118.135	4/16/2008
CPI Low	101.0500	101.060	116.450	116.245	4/16/2008
Auction Price	99.2700	99.157	na	na	
Last Trade	99.1820	99.120	114.180	115.090	5/14/2008 5:47

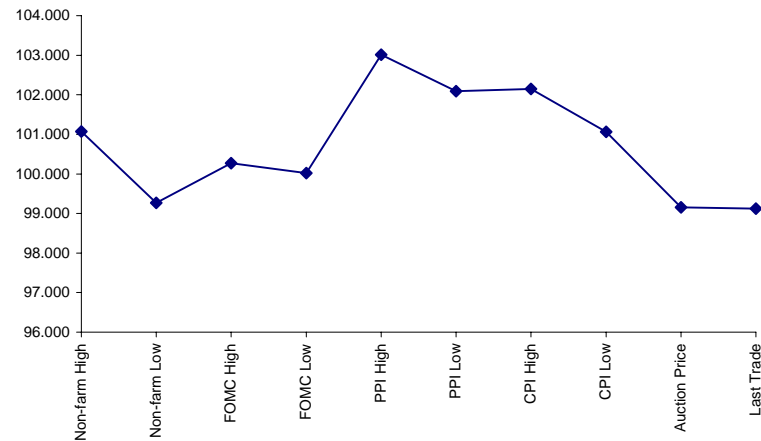
Auctions - 32nds

	2 y	5y	10y	30y
Auction Price	99.258	99.270	99.157	96.120
Auction Yield Stop	2.225	3.159	3.937	4.599
Actual Auction Date	4/23/2008	4/24/2008	5/7/2008	5/8/2008 r

5y (Decimal)



10y (Decimal)



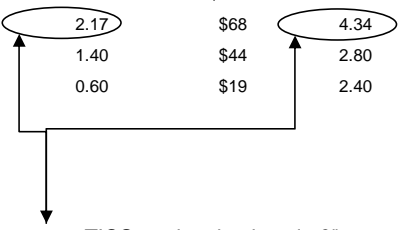
Notes:

- 1) Cash and futures are adjusted for roll.
- 2) Release times are from release to 2pm cdt
- 3) {Mch08 to Jun08 Futures roll: ZF = (-20); ZN = (-43); ZB = (-36) [tics]}

Quotes

		32 nds					
	Last	Net	High	Low	Open	Volume	Sym Name
TUAM8	105.252	(0.037)	105.300	105.240	105.292	57,842	2y Fut
FVAM8	111.075	(0.065)	111.165	111.055	111.140	91,826	5y Fut
TYAM8	114.180	(0.115)	114.310	114.140	114.275	157,808	10y Fut
USAM8	115.090	(0.18)	115.245	115.040	115.170	27,628	30y Fut
	Last	Net	High	Low	Open	Volume	Sym Name
BUS02P	99.072	(0.037)	99.115	99.067	99.105	na	2y Cash
BUS05P	99.180	(0.070)	99.272	99.165	99.247	na	5y Cash
BUS10P	99.120	(0.105)	99.240	99.095	99.210	na	10y Cash
BUS30P	95.085	(0.220)	95.310	95.070	95.310	na	30y Cash
	Last	Net	High	Low	Open	Volume	Sym Name
BUS02Y	2.533	0.071	2.549	2.454	2.491	na	2y Yield
BUS05Y	3.220	0.050	3.235	3.154	3.175	na	5y Yield
BUS10Y	3.949	0.040	3.965	3.902	3.915	na	10y Yield
BUS30Y	4.667	0.040	4.679	4.618	4.629	na	30y Yield

	M Duration	DV01 32	DV01 \$	DV01 Box	CF	
30y	16.03	4.94	\$1,544	9.88	n/a	30y
10y	8.08	2.52	\$786	5.03	n/a	10y
5y	4.49	1.46	\$456	5.84	n/a	5y
2y	1.90	0.60	\$189	2.42	n/a	2y
ZB	10.14	3.79	\$118	3.79	0.7765	ZB
ZN	5.84	2.17	\$68	4.34	0.8448	ZN
ZF	3.89	1.40	\$44	2.80	0.8809	ZF
ZT	1.76	0.60	\$19	2.40	0.9336	ZT



DV01 32, said differently, is "how many TICS are in a basis point?".

Example, If ZN moves 1~basis point, then, it's moved 2.59 tics (Today, 03/29/08, the value in the box is 2.59).

Since ZN trades in half tics, then, 5.17 boxes = 1 basis point in ZN. (Again, today, 03/28/08, the value in the box is 5.17). Of course the values will be different as you look at this. But, they won't be that much different. So, I think you can get the idea I'm trying to get across.

Notes

CF = Conversion Factor

MDuration = Modified Macaulay Duration

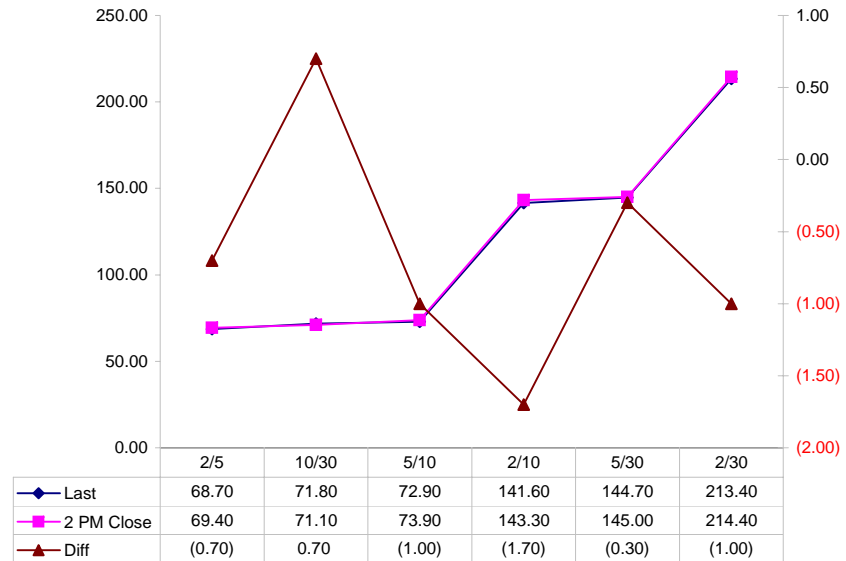
MDuration & DV01s for Futures are based on proxy issue (CTD)

DV01 Box = Dollar Value of 1 basis point move per Box

Yield Curve Spreads

	Last	2pm close	Diff
2/5	68.70	69.40	(0.70)
10/30	71.80	71.10	0.70
5/10	72.90	73.90	(1.00)
2/10	141.60	143.30	(1.70)
5/30	144.70	145.00	(0.30)
2/30	213.40	214.40	(1.00)

Curve Spreads vs 2pm close



US Financial Futures / Eurex Bond

	ZB	ZN	ZF	ZT
Bund (M)	1.070	1.871	2.898	3.335
Bobl (M)	0.588	1.028	1.593	1.833
Shatz (M)	0.239	0.418	0.647	0.745

US Financial Futures

	ZB	ZN	ZF	ZT
ZB		1.747	2.706	3.156
ZN	0.572		1.549	1.807
ZF	0.370	0.646		1.166
ZT	0.317	0.554	0.858	

Eurex Bonds

	Bund (H)	Bobl (H)	Shatz (H)
Bund (H)		1.8	4.5
Bobl (H)	0.5		2.5
Shatz (H)	0.2	0.4	

US Treasuries v US Financial Futures

	2y	5y	10y	30y
ZB	1.60	3.85	6.64	13.04
ZN	2.79	6.73	11.60	22.78
ZF	4.32	10.42	17.96	35.30
ZT	5.04	12.15	20.95	41.16

US Treasuries v Eurex Bonds

	2y	5y	10y	30y
Bund (M)	1.5	3.6	6.2	12.3
Bobl (M)	2.7	6.5	11.2	22.4
Shatz (M)	6.7	16.0	27.6	54.9

US Treasuries

	2y	5y	10y	30y
2y		2.412	4.158	8.169
5y	0.415		1.723	3.386
10y	0.241	0.580		1.965
30y	0.122	0.295	0.509	

Note: If you are looking at a matrix with Eurex products then those ratios are pulled from Bloomberg and are static. Meaning, I only update them once in a while but always on rolls. I calculate the other matrixes, with US products, everyday

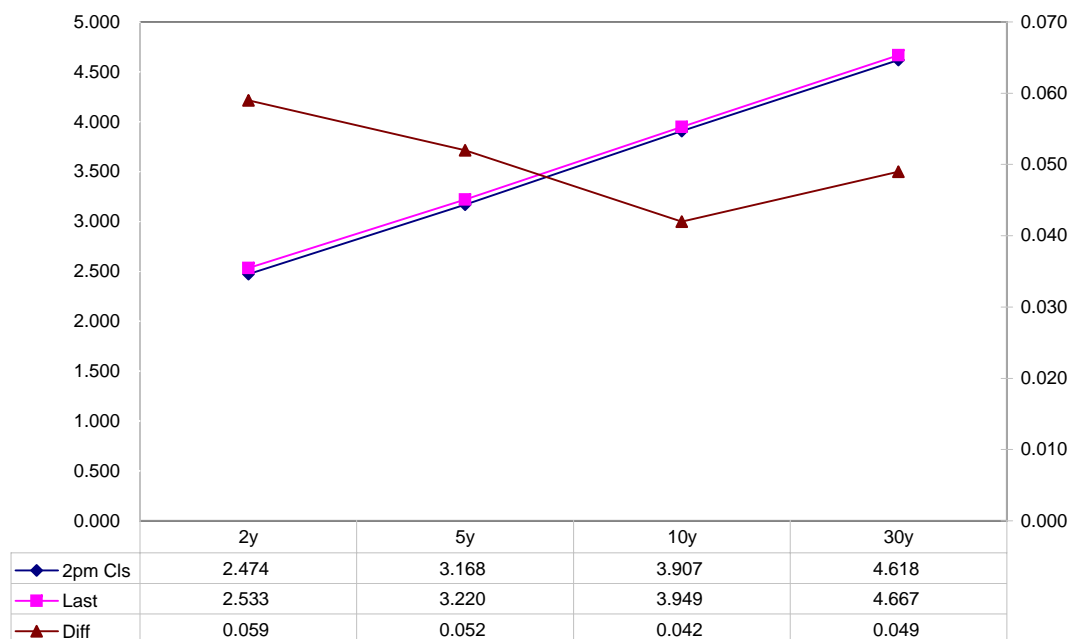
Closes: 2pm CT vs this Morning

	Cpn	Mty	Close 32	Close	Last	Diff	Basis			Close 32	Last	
							Close	Last	Roll			
2y	2.125	4/30/10	99.1075	2.474	2.533	0.059	14.777	14.777	na	105.2875	105.2520	TUAM8
5y	3.125	4/30/13	99.2575	3.168	3.220	0.052	52.24	50.64	na	111.1425	111.0750	FVAM8
10y	3.875	5/15/18	99.235	3.907	3.949	0.042	84.75	82.96	na	114.295	114.180	TYAM8
30y	4.375	5/15/37	96.025	4.618	4.667	0.049	196.01	186.99	na	115.270	115.090	USAM8

Curve Spreads

	Close bps	Last bps
2/5	69.4	68.7
5/10	73.9	72.9
10/30	71.1	71.8
2/10	143.3	141.6
5/30	145.0	144.7
2/30	214.4	213.4

US Treasuries Last v 2pm Close



Notes:

Basis = (Cash Decimal - (Futures Decimal * CF))*32

MDuration for Curve Spreads:

Longer duration minus shorter duration

32 = price is quoted in 32nds

Cash Duration Matrix

	2	5	10	30
2	100%			
5	42%	100%		
10	24%	56%	100%	
30	12%	28%	50%	100%

What is this? (1):
 2yr cash has X% duration of 5yr cash .

Cash Matrix [DV01 x Duration]

	2	5	10	30
2	\$189			
5	\$193	\$456		
10	\$185	\$436	\$786	
30	\$183	\$432	\$779	\$1,544

What is this? (2):
 - 2yr cash has DV01 of X\$
 - Multiply the 2yr DV01 by the percent duration to come up with what the 2yrs DV01 SHOULD be compared to the 5yr.

Cash Matrix [DV01 over / (under) valued]

	2	5	10	30
2				
5	(\$4)			
10	\$4	\$20		
30	\$6	\$24	\$7	

What is this? (3):
 - Now you can see the over/under value, based on the DV01, from contract to contract. In this example we are looking at the 2yr compared to the 5yr.

Cash Matrix [DV01 over / (under) as %]

	2	5	10	30
2				
5	-2.28%			
10	2.11%	4.50%		
30	3.08%	5.48%	0.94%	

Or you can look at the over/under value as a percentage instead of dollar terms.

Tic for Tic Matrix

	2y	5y	10y	30y
ZT	1.01	2.43	4.19	8.23
ZF	0.43	1.04	1.80	3.53
ZN	0.28	0.67	1.16	2.28
ZB	0.16	0.39	0.66	1.30

	2y	5y	10y	30y
2y		2.41	4.16	8.17
5y	0.41		1.72	3.39
10y	0.24	0.58		1.96
30y	0.12	0.30	0.51	

	ZT	ZF	ZN	ZB
ZT		2.33	3.61	6.31
ZF	0.43		1.55	2.71
ZN	0.28	0.65		1.75
ZB	0.16	0.37	0.57	

Box for Box Matrix

	2y	5y	10y	30y
ZT	1.01	2.43	8.38	16.46
ZF	0.43	1.04	3.59	7.06
ZN	0.56	1.35	1.16	2.28
ZB	0.64	0.77	1.33	1.30

	2y	5y	10y	30y
2y		2.41	2.08	4.08
5y	0.41		0.43	1.69
10y	0.48	2.32		1.96
30y	0.24	0.59	0.51	

	ZT	ZF	ZN	ZB
ZT		2.33	7.23	12.62
ZF	0.43		1.55	5.41
ZN	0.14	0.65		1.75
ZB	0.08	0.18	0.57	

	Libor\$ ¹	Repo Rt ⁶
0/N	2.203	#VALUE!
1week	2.400	#VALUE!
2week	2.449	#VALUE!

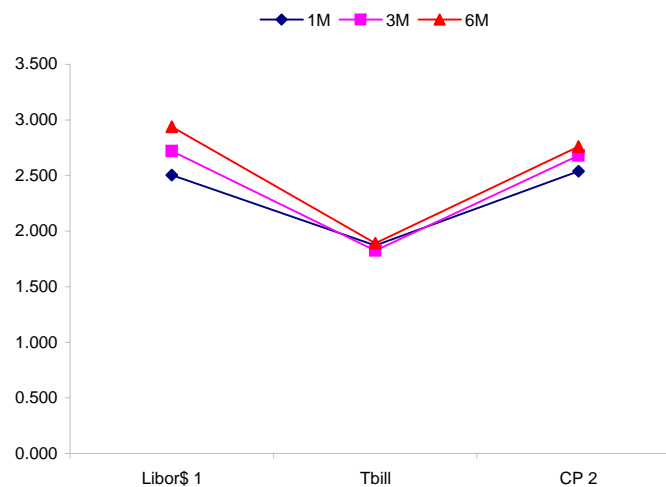
	Libor\$ ¹	Tbill	CP ²
1M	2.505	1.870	2.540
3M	2.720	1.825	2.680
6M	2.939	1.890	2.760

	TSY	Swp	Swp Rate ⁵	ED Pks ³	TSY - ED Pk ⁴
2y	2.532	84.75	3.38	3.847	1.315
5y	3.218	84.75	4.07	4.788	1.571
10y	3.951	64.50	4.60	#VALUE!	#VALUE!

<u>2/5</u>	<u>Rd/Blu Pk</u>	<u>Diff</u>
68.5	94.1	25.6
<u>2/10</u>	<u>Rd/Gld Pk</u>	<u>Diff</u>
141.9	#VALUE!	#VALUE!
<u>5/10</u>	<u>Blu/Gld Pk</u>	<u>Diff</u>
73.4	#VALUE!	#VALUE!

Red pack / Blue pack is a 2/5 proxy
 Red pack / Gold pack is a 2/10 proxy
 Blue pack / Gold pack is a 5/10 proxy

"Swap spreads are essentially a measure of the difference between buying a safe government bond and making a riskier loan to a bank"
 --WSJ



Notes:

- 1) Quoted in US Dollars
- 2) CP = Commercial Paper
- 3) ED Pks are colored for pack identifications. Example, the red pack is a 2-yr proxy and is colored red.
- 4) TSY yield minus ED Pk yield
- 5) Swap divided by 100 + TSY yield gives swap rate in basis points.
- 6) Repo Rt quotes is for overnight General Collateral

	Last	Chng	Term	Asset Type
USDLIBON	2.203	0.0012	Overnight	LIBOR
TUSFFRON	2.000	0.2500	Overnight	Fed Funds Effective Rate
TUSRPOON	#VALUE!	#VALUE!	Overnight	Repo Rate
TEONIA01M	4.018	(0.0050)	1 month	Euribor OIS Rate
TEONIA03M	4.034	(0.0060)	3 month	Euribor OIS Rate
TSONIA01M	5.035	(0.0010)	1 month	Sterling OIS Rate
TSONIA03M	5.017	0.0070	3 month	Sterling OIS Rate
TUSOIS01M	1.995	0.0020	1 month	USD OIS Rate
TUSOIS03M	1.996	0.0040	3 month	USD OIS Rate

