

The Morning Email: Commitment of Traders (CoT) & Dealer Positions (DP)

Table of Contents

- Pg 1** NYMEX: Energy Complex
- Pg 2** CME: Treasury Futures
- Pg 3** CME: Eurodollars
- Pg 4** Dealers: Total Securities Owned - GSE and Govs
- Pg 5** Dealers: Treasury Coupon Positions by Maturity
- Pg 6** Dealers: Total Corporate & Mortgage-backed Securites Owned
- Pg 7** CIT Positions NEW

Want something added? Let me know: jgoulding@ghco.com

Disclaimer: All information within this newsletter is meant for internal use at GH Trader's LLC, only. All information has been recorded to the best of my ability. This material is based upon information that I consider reliable, but I do not represent that it is accurate or complete.

	Current Positions									
	Small Spec			Large Spec			Commercials (Hedgers)			
	Long	Short	Net	Long	Short	Net	Long	Short	Net	
Crude Oil ^	48,314	75,450	(27,136)	187,191	108,321	78,870	1,541,270	1,593,005	(51,735)	Crude Oil
Heating Oil	33,324	26,678	6,646	23,742	11,177	12,565	140,815	160,026	(19,211)	Heating Oil
Unleaded Gas	14,834	12,285	2,549	47,108	10,937	36,171	91,545	130,265	(38,720)	Unleaded Gas
Natural Gas	78,315	36,361	41,954	91,174	263,871	(172,697)	471,346	340,604	130,742	Natural Gas

^ Light Sweet

As of	Week over Week Change			
	Sml Spec	Lrg Spec	Comm	
	Net	Net	Net	
11/4/2008	Crude Oil	(32,248)	71,021	(38,774)
	Heating Oil	3,105	(17,876)	14,769
	Unleaded Gas	(36,668)	170,510	(133,843)
	Natural Gas	69,090	(251,567)	182,477

Current Positions

	Small Spec			Large Spec			Commercials (Hedgers)			
	Long	Short	Net	Long	Short	Net	Long	Short	Net	
ZF	199,178	236,377	(37,199)	386,600	167,734	218,866	800,873	982,540	(181,667)	ZF
ZN	242,365	314,903	(72,538)	192,084	137,541	54,543	998,718	980,725	17,993	ZN
ZB	113,263	149,978	(36,715)	46,204	149,380	(103,176)	623,916	484,025	139,891	ZB

Week over Week Change

As of	Sml Spec	Lrg Spec	Comm
11/4/2008	Net	Net	Net
ZF	(16,452)	(40,427)	56,879
ZN	(8,349)	57,563	(49,215)
ZB	4,726	(4,016)	(710)

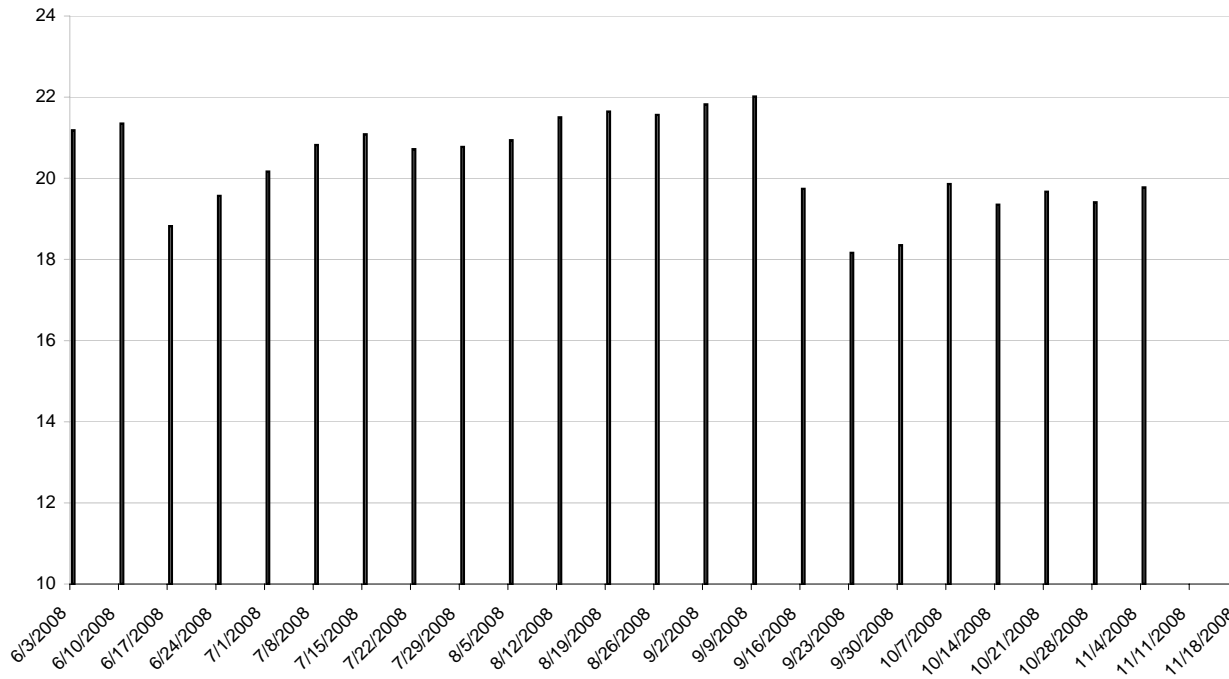
Current Positions

Small Spec			Large Spec			Commercials		
Long	Short	Net	Long	Short	Net	Long	Short	Net
967,311	808,709	158,602	772,124	376,471	395,653	8,148,472	8,702,727	(554,255)

Week over Week Change

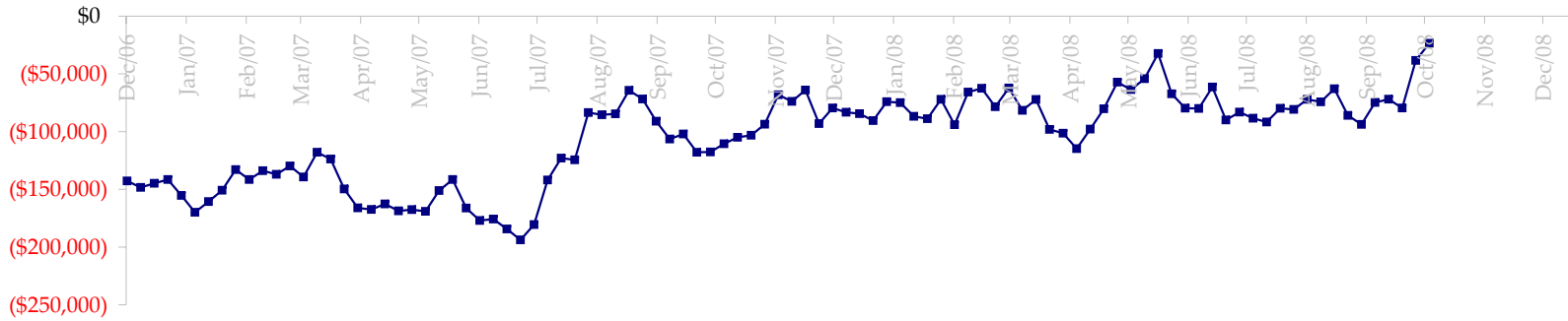
As of	Sm Spec	Lg Spec	Commrc
11/4/2008	(39,655)	(68,712)	108,367

ED Total Open Interest

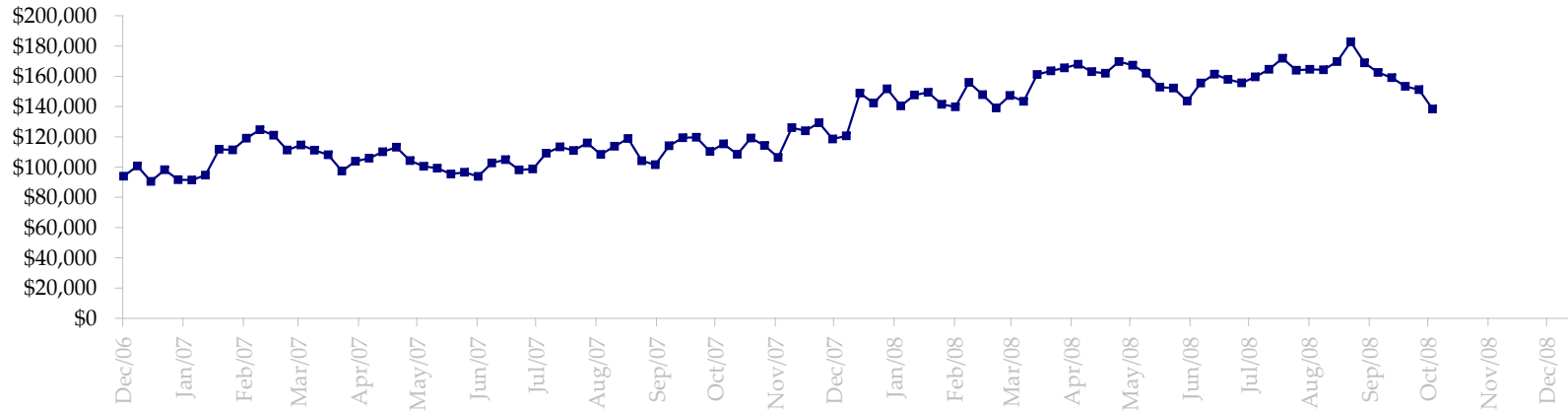


Date	Total O.I.
6/3/2008	21,184,002
6/10/2008	21,349,326
6/17/2008	18,821,063
6/24/2008	19,568,636
7/1/2008	20,166,373
7/8/2008	20,819,989
7/15/2008	21,083,764
7/22/2008	20,720,384
7/29/2008	20,775,687
8/5/2008	20,940,673
8/12/2008	21,505,499
8/19/2008	21,644,124
8/26/2008	21,564,056
9/2/2008	21,823,622
9/9/2008	22,016,222
9/16/2008	19,740,627
9/23/2008	18,162,093
9/30/2008	18,354,501
10/7/2008	19,858,978
10/14/2008	19,350,280
10/21/2008	19,668,213
10/28/2008	19,408,426
11/4/2008	19,775,814
11/11/2008	0
11/18/2008	0

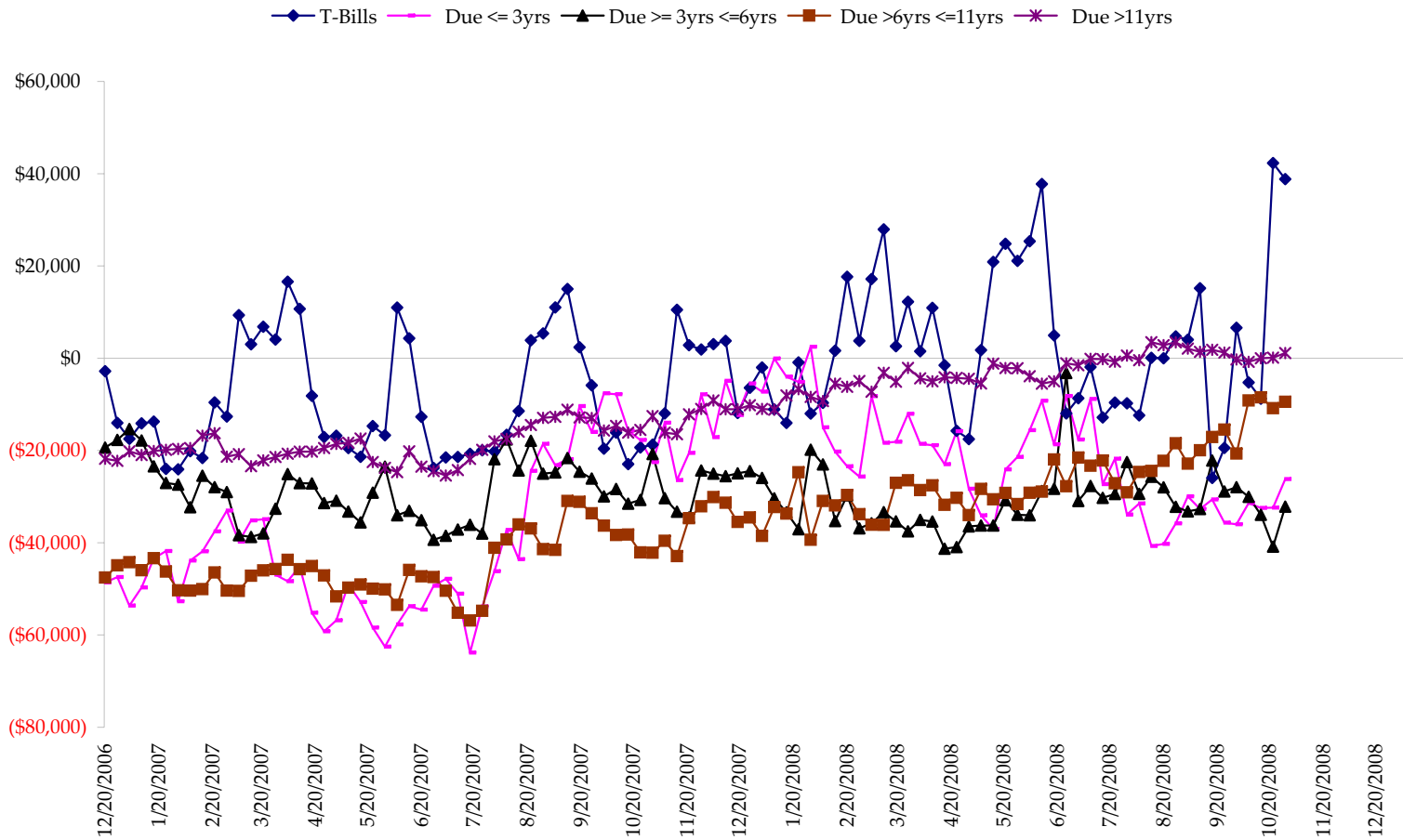
Total US Government Total Securities: Coupons - (\$mln)



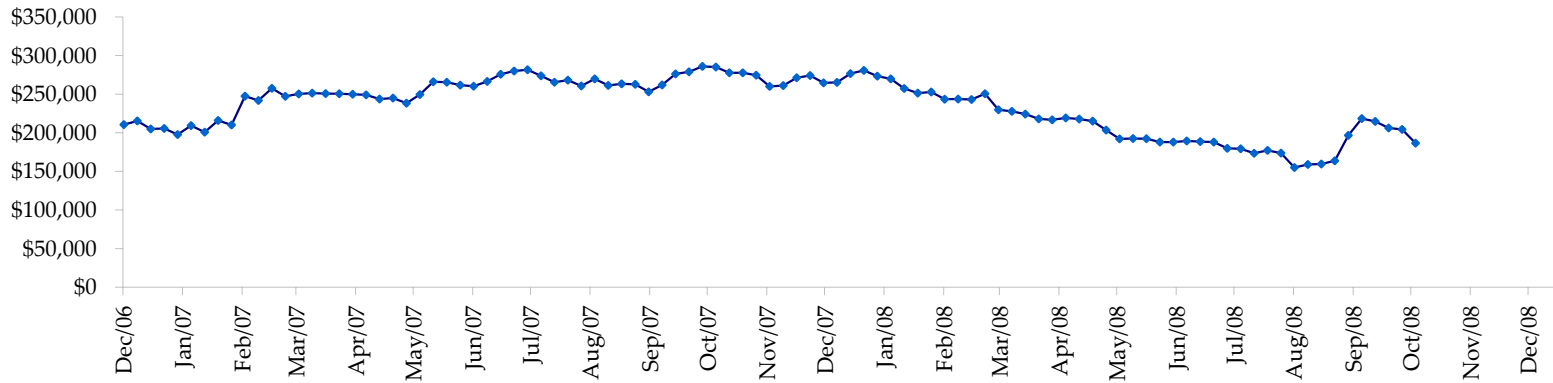
Fed Agency & GSE Total Securities: Coupons - (\$mln)



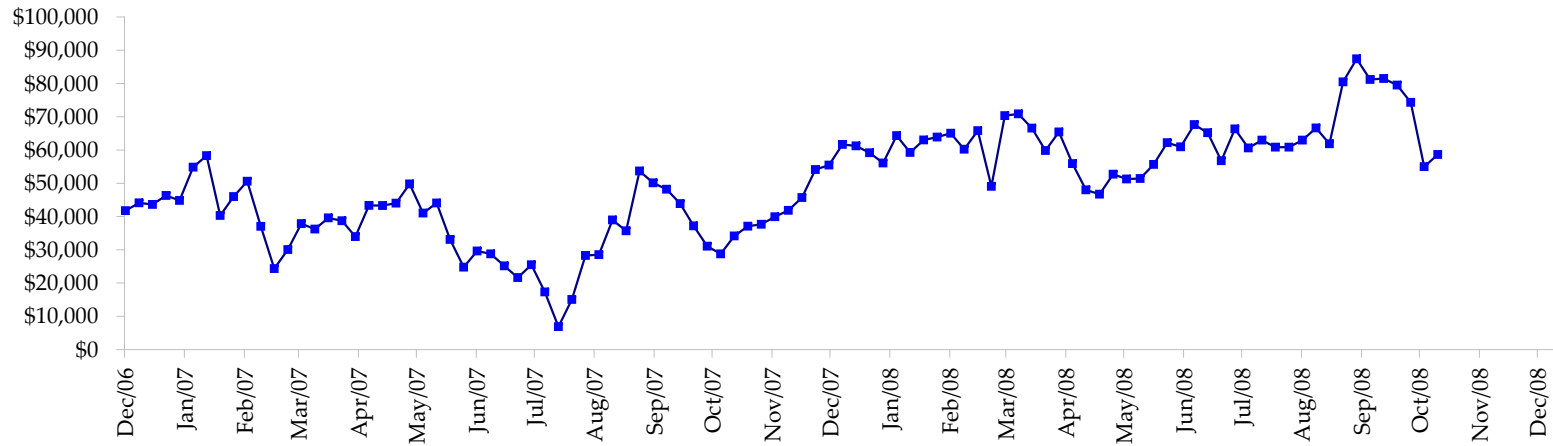
All dates are 'as of'.



Total Corporate Securities - (\$mln)



Total Mortgage Position - (\$mln)



We are interested in the last column, CIT % OI. That stands for Commercial Index Traders, percent Open Interest.

This table, compliments of CommitmentofTraders.com

Supplemental Commitments of Traders Report breaking out the Commercial Index Traders (CIT).															
Analysis of open interest -with option deltas- as of 11/04/2008															
Summary prepared by www.Commitments of Traders .com															
Commodity	Small Sp			Large Sp			- No CIT			Commerc			CIT	Total	CIT
	NonRepo			Non Com			Comm			Long	Short	Net			
	Long	Short	Net	Long	Short	Net	Long	Short	Net	Long	Short	Net	Interest		
Wheat	30531	49971	-19440	27898	56877	-28979	34529	124434	-89905	160570	22247	138323	434511	31%	
K C Wheat	16950	24189	-7239	12372	11285	1087	32752	43154	-10402	18526	1973	16553	95890	17%	
Corn	164967	229029	-64062	81217	103756	-22539	466017	619650	-153633	312727	72491	240236	1714300	14%	
Soybeans	47214	64966	-17752	34044	16362	17682	87233	190403	-103170	113827	10588	103239	412958	24%	
Soybean Oil	23243	23949	-706	11403	25058	-13655	129487	169180	-39693	64277	10223	54054	331137	16%	
Cotton	13201	11740	1461	20373	23570	-3197	74175	142730	-68555	79667	9375	70292	304540	23%	
Lean Hogs	17290	30491	-13201	30146	25526	4620	20633	89920	-69287	82556	4688	77868	197204	39%	
Lv Cattle	16113	44659	-28546	35131	41155	-6024	35906	108371	-72465	111563	4528	107035	266244	40%	
Feeder	3744	8584	-4840	4496	7300	-2804	4140	2089	2051	6312	718	5594	20739	26%	
Cocoa	3904	4471	-567	29091	22699	6392	69838	82587	-12749	25190	18266	6924	163060	4%	
Sugar No 11	67949	63776	4173	80362	49562	30800	242083	518292	-276209	312136	70901	241235	950267	25%	
Coffee	6783	6424	359	11676	25025	-13349	62207	88061	-25854	42929	4084	38845	196089	19%	
			-150360			-29966			-919871			1100198	5086939	21%	
Supplemental Commitments of Traders Report breaking out the Commercial Index Traders (CIT).															
Analysis of open interest -with option deltas- as of 10/28/2008															
Summary prepared by www.Commitments of Traders .com															
Commodity	Small Sp			Large Sp			- No CIT			Commerc			CIT	Total	CIT
	NonRepo			Non Com			Comm			Long	Short	Net			
	Long	Short	Net	Long	Short	Net	Long	Short	Net	Long	Short	Net	Interest		
Wheat	22143	42846	-20703	23153	62047	-38894	35868	115055	-79187	164958	26174	138784	430190	32%	
K C Wheat	16585	24106	-7521	12632	12155	477	33628	42878	-9250	18292	1999	16293	96149	16%	
Corn	143541	220144	-76603	81405	100869	-19484	469257	618938	-149681	316449	70681	245768	1697112	14%	
Soybeans	50232	73541	-23309	28393	20752	7641	103694	191624	-87930	115339	11741	103598	419138	24%	
Soybean Oil	22057	26891	-4834	12059	33986	-21927	132260	163255	-30995	67484	9727	57757	336701	17%	
Cotton	12342	11741	601	20072	25493	-5421	76422	142584	-66162	80291	9308	70983	310220	22%	
Lean Hogs	17331	29485	-12154	26290	24785	1505	19032	89433	-70401	83148	2098	81050	190193	42%	
Lv Cattle	17850	44755	-26905	31671	44222	-12551	36707	104835	-68128	112144	4559	107585	260878	41%	
Feeder	4275	8774	-4499	4013	8248	-4235	5419	1982	3437	6340	1044	5296	23614	22%	
Cocoa	3277	4415	-1138	30216	24861	5355	70970	83182	-12212	26078	18084	7994	164042	4%	
Sugar No 11	62370	66685	-4315	72085	66254	5831	246590	494963	-248373	315477	68619	246858	936270	26%	
Coffee	5528	6188	-660	9939	26334	-16395	63910	86553	-22643	44216	4518	39698	202586	19%	
			-182040			-98098			-841525			1121664	5067093	22%	

Most Current Date

Prior Week's Date