

The Morning Email: Commitment of Traders (CoT) & Dealer Positions (DP)

Table of Contents

- Pg 1** NYMEX: Energy Complex
- Pg 2** CME: Treasury Futures
- Pg 3** CME: Eurodollars
- Pg 4** Dealers: Total Securities Owned - GSE and Govs
- Pg 5** Dealers: Treasury Coupon Positions by Maturity
- Pg 6** Dealers: Total Corporate & Mortgage-backed Securites Owned
- Pg 7** CIT Positions **NEW**

Want something added? Let me know: jgoulding@ghco.com

Disclaimer: All information within this newsletter is meant for internal use at GH Trader's LLC, only. All information has been recorded to the best of my ability. This material is based upon information that I consider reliable, but I do not represent that it is accurate or complete.

Current Positions											
	Small Spec			Large Spec			Commercials (Hedgers)				
	Long	Short	Net	Long	Short	Net	Long	Short	Net		
Crude Oil ^	62,069	80,319	(18,250)	169,916	124,232	45,684	1,440,215	1,467,649	(27,434)	Crude Oil	
Heating Oil	34,994	27,215	7,779	20,267	13,733	6,534	132,060	146,373	(14,313)	Heating Oil	
Unleaded Gas	16,381	12,301	4,080	37,604	16,587	21,017	99,257	124,355	(25,098)	Unleaded Gas	
Natural Gas	75,487	38,553	36,934	219,772	386,950	(167,178)	485,400	355,156	130,244	Natural Gas	
^ Light Sweet											
Week over Week Change											
As of	Sml Spec			Lrg Spec		Comm					
10/7/2008	Net			Net		Net					
Crude Oil	(26,766)			39,776		(13,011)					
Heating Oil	4,114			(14,579)		10,464					
Unleaded Gas	(35,314)			217,363		(182,049)					
Natural Gas	55,184			(212,862)		157,678					

Current Positions

	Small Spec			Large Spec			Commercials (Hedgers)			
	Long	Short	Net	Long	Short	Net	Long	Short	Net	
ZF	224,466	230,738	(6,272)	397,965	148,860	249,105	890,316	1,133,150	(242,834)	ZF
ZN	275,304	354,819	(79,515)	257,182	191,982	65,200	1,174,602	1,160,286	14,316	ZN
ZB	128,803	186,024	(57,221)	67,386	172,021	(104,635)	663,775	501,918	161,857	ZB

Week over Week Change

As of	Sml Spec	Lrg Spec	Comm
10/7/2008	Net	Net	Net
ZF	29,687	(32,073)	2,386
ZN	(50,600)	103,568	(52,967)
ZB	(19,702)	(6,926)	26,629

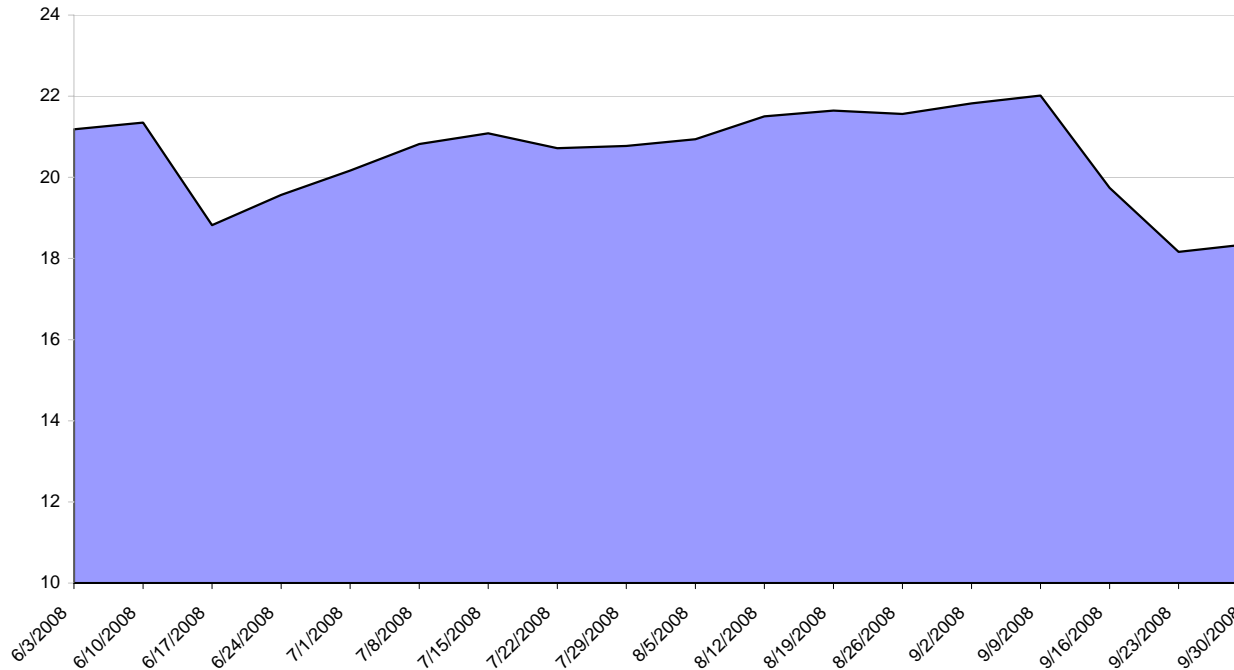
Current Positions

Small Spec			Large Spec			Commercials		
Long	Short	Net	Long	Short	Net	Long	Short	Net
966,402	914,047	52,355	886,202	471,813	414,389	8,076,885	8,543,629	(466,744)

Week over Week Change

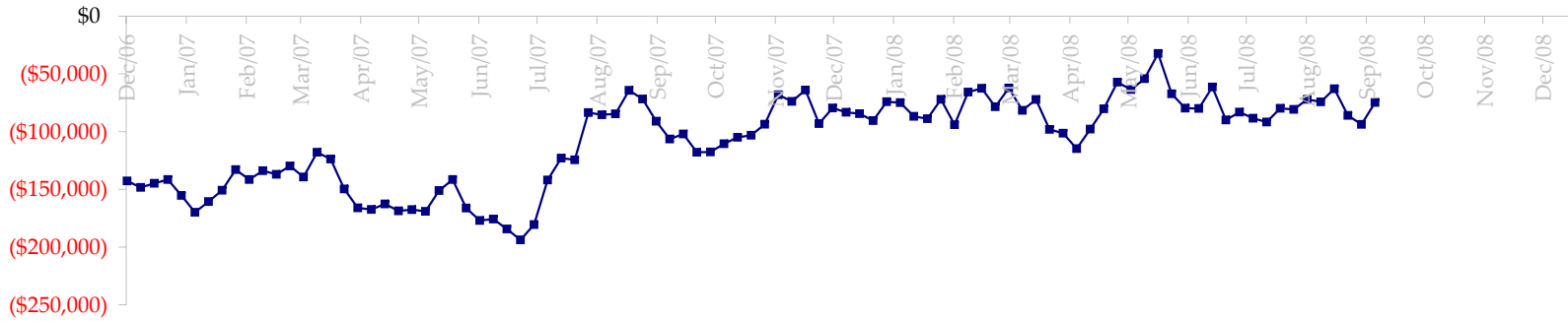
As of	Sm Spec	Lg Spec	Commrc
10/7/2008	42,383	46,999	(89,383)

ED Total Open Interest

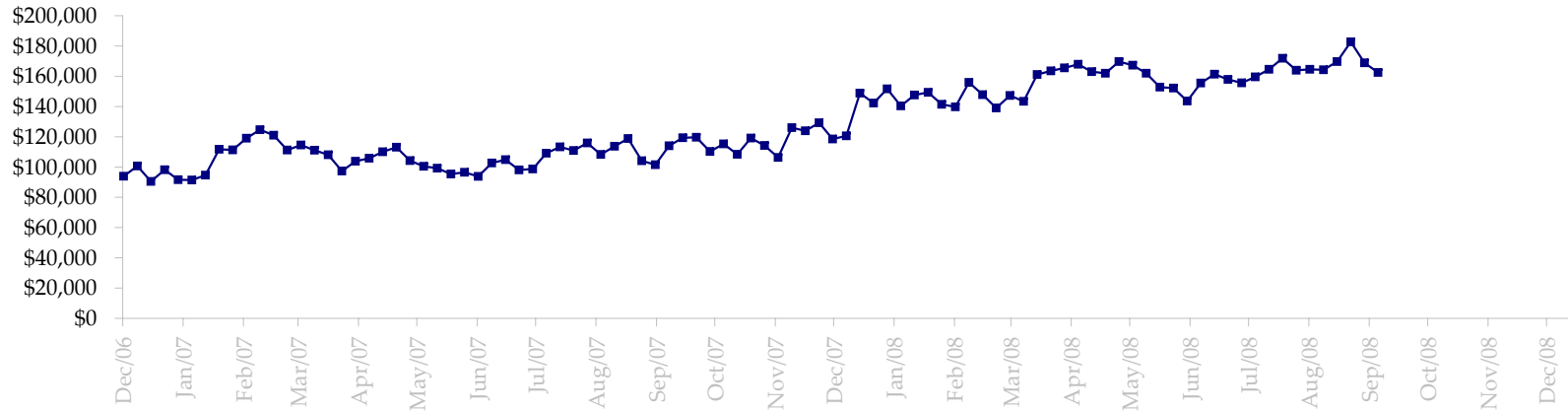


Date	Total O.I.
6/3/2008	21,184,002
6/10/2008	21,349,326
6/17/2008	18,821,063
6/24/2008	19,568,636
7/1/2008	20,166,373
7/8/2008	20,819,989
7/15/2008	21,083,764
7/22/2008	20,720,384
7/29/2008	20,775,687
8/5/2008	20,940,673
8/12/2008	21,505,499
8/19/2008	21,644,124
8/26/2008	21,564,056
9/2/2008	21,823,622
9/9/2008	22,016,222
9/16/2008	19,740,627
9/23/2008	18,162,093
9/30/2008	18,354,501
10/7/2008	19,858,978
10/14/2008	0
10/21/2008	0
10/28/2008	0
11/4/2008	0
11/11/2008	0
11/18/2008	0

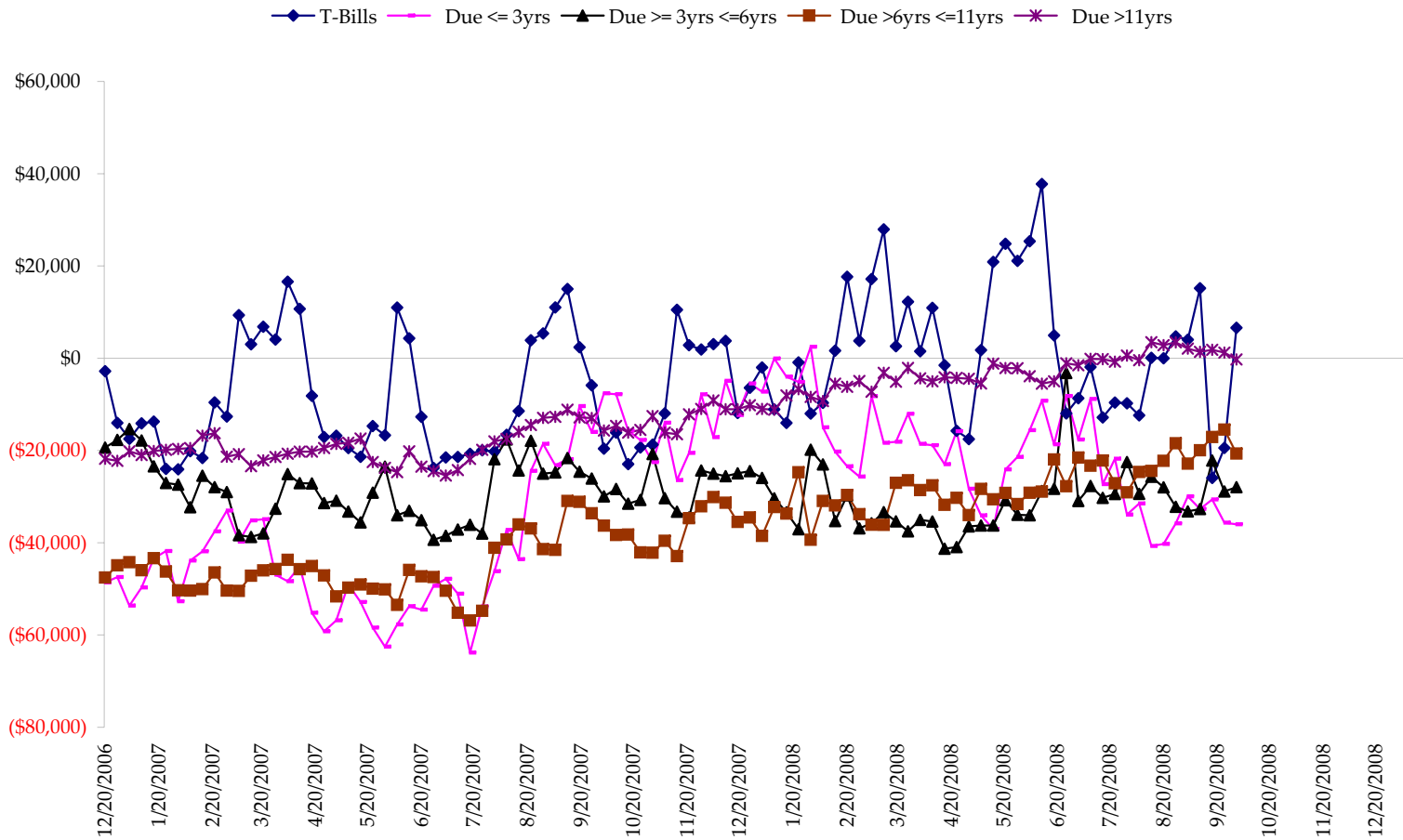
Total US Government Total Securities: Coupons - (\$mln)



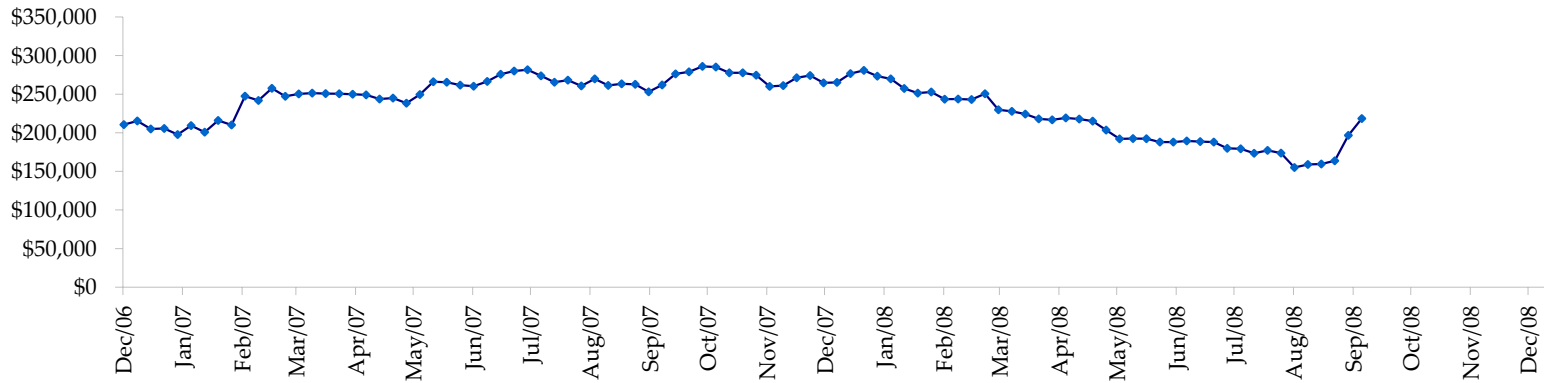
Fed Agency & GSE Total Securities: Coupons - (\$mln)



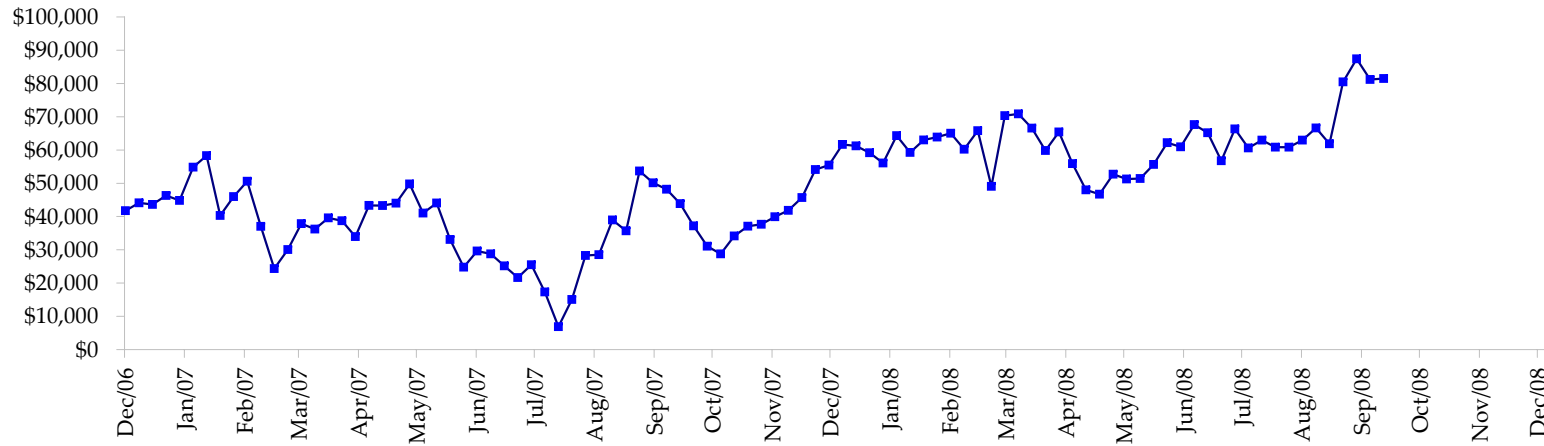
All dates are 'as of'.



Total Corporate Securities - (\$mln)



Total Mortgage Position - (\$mln)



We are interested in the last column, CIT % OI. That stands for Commercial Index Traders, percent Open Interest.

This table, compliments of CommitmentofTraders.com

Supplemental Commitments of Traders Report breaking out the Commercial Index Traders (CIT).															
Analysis of open interest -with option deltas- as of 10/07/2008															
Summary prepared by www.Commitments of Traders .com															
Commodity	Small Spd			Large Sp			- No CIT			Commerc			Total	CIT	
	NonRepo			Non Com			Short	Net	Comm			CIT			Open
	Long	Short	Net	Long	Short	Net	Long	Short	Net	Long	Short	Net	Interest		
Wheat	25526	51257	-25731	27628	68208	-40580	33236	121113	-87877	180279	26091	154188	415737	37%	
K C Wheat	17380	26010	-8630	11690	11490	200	32886	42808	-9922	20091	1739	18352	97320	18%	
Corn	145986	252983	-106997	100830	84260	16570	454593	649951	-195358	342628	56844	285784	1728906	16%	
Soybeans	51637	88935	-37298	41411	25537	15874	116238	210634	-94396	136742	20922	115820	575501	20%	
Soybean Oil	23819	25991	-2172	17336	26075	-8739	126614	181518	-54904	74156	8340	65816	335790	19%	
Cotton	13459	12608	851	22322	32350	-10028	77701	152090	-74389	91208	7642	83566	343138	24%	
Lean Hogs	20364	32412	-12048	19992	29889	-9897	23019	93920	-70901	93913	1066	92847	206152	45%	
Lv Cattle	19852	52866	-33014	35168	51398	-16230	41133	116998	-75865	127223	2114	125109	275334	45%	
Feeder	5103	9845	-4742	3610	9368	-5758	6389	2080	4309	7548	1356	6192	27605	22%	
Cocoa	5627	3582	2045	25144	20909	4235	60593	83373	-22780	22351	5850	16501	134137	12%	
Sugar No 11	66299	67053	-754	74510	63097	11413	236495	527397	-290902	343522	63280	280242	957222	29%	
Coffee	7392	7624	-232	11331	28348	-17017	63892	93346	-29454	50468	3765	46703	211850	22%	
			-228722			-59957			-1002439				1291120	5308692	24%

Most Current Date

Supplemental Commitments of Traders Report breaking out the Commercial Index Traders (CIT).															
Analysis of open interest -with option deltas- as of 09/30/2008															
Summary prepared by www.Commitments of Traders .com															
Commodity	Small Spd			Large Sp			- No CIT			Commerc			Total	CIT	
	NonRepo			Non Com			Short	Net	Comm			CIT			Open
	Long	Short	Net	Long	Short	Net	Long	Short	Net	Long	Short	Net	Interest		
Wheat	25392	52266	-26874	28452	66054	-37602	32277	130064	-97787	185639	23375	162264	402722	40%	
K C Wheat	16194	23000	-6806	12143	11866	277	31099	46889	-15790	22632	312	22320	95512	23%	
Corn	147683	255360	-107677	115113	74200	40913	444931	684008	-239077	353967	48128	305839	1685800	18%	
Soybeans	51628	86103	-34475	41944	28806	13138	100770	209525	-108755	145511	15419	130092	555265	23%	
Soybean Oil	21313	24093	-2780	20253	29149	-8896	110290	167689	-57399	76496	7421	69075	319854	21%	
Cotton	14945	14197	748	23217	33177	-9960	82209	160570	-78361	96168	8594	87574	359892	24%	
Lean Hogs	24007	34006	-9999	23655	30717	-7062	21307	100188	-78881	96215	272	95943	216467	44%	
Lv Cattle	24453	57322	-32869	41440	55627	-14187	36950	118333	-81383	131520	3081	128439	291455	44%	
Feeder	4816	9290	-4474	4406	9933	-5527	6277	2256	4021	7469	1489	5980	28697	20%	
Cocoa	9262	6187	3075	29156	21220	7936	56118	87275	-31157	24577	4431	20146	137900	14%	
Sugar No 11	69177	61432	7745	94474	51469	43005	230304	581236	-350932	361823	61641	300182	979169	30%	
Coffee	5299	5612	-313	21800	25206	-3406	54694	101789	-47095	53780	2965	50815	194219	26%	
			-214699			18629			-1182596				1378669	5266952	26%

Prior Week's Date