

Central Time

8/11/2008 7:19

**The Morning Email: Commitment of Traders (CoT) & Dealer Positions (DP)**

**Table of Contents**

**Pg 1** Energy: NYMEX

**Pg 2** CBOT: Financial Futures

**Pg 3** CME: Eurodollars

**Pgs 4,5,6** Dealer Positions

**Pg 7** CIT Positions **NEW**

Want something added? Let me know: [jgoulding@ghco.com](mailto:jgoulding@ghco.com)

**Disclaimer:** All information within this newsletter is meant for internal use at GH Trader's LLC, only. All information has been recorded to the best of my ability. This material is based upon information that I consider reliable, but I do not represent that it is accurate or complete.

Current Positions

	Small Spec			Large Spec			Commercials (Hedgers)			
	Long	Short	Net	Long	Short	Net	Long	Short	Net	
Crude Oil ^	68,721	77,534	(8,813)	208,073	135,972	72,101	1,328,667	1,391,955	(63,288)	Crude Oil
Heating Oil	35,572	28,150	7,422	27,895	17,139	10,756	137,653	155,831	(18,178)	Heating Oil
Unleaded Gas	18,891	13,089	5,802	58,450	11,685	46,765	131,729	184,295	(52,566)	Unleaded Gas
Natural Gas	84,610	38,723	45,887	195,501	414,689	(219,188)	536,187	362,887	173,300	Natural Gas

^ Light Sweet

Week over Week Change

As of	Sml Spec	Lrg Spec	Comm
8/5/2008	Net	Net	Net
Crude Oil	(18,714)	62,921	(44,206)
Heating Oil	847	(33,210)	32,364
Unleaded Gas	(42,694)	262,941	(220,246)
Natural Gas	54,700	(291,289)	236,588

Current Positions

	Small Spec			Large Spec			Commercials (Hedgers)			
	Long	Short	Net	Long	Short	Net	Long	Short	Net	
ZF	230,527	237,613	(7,086)	376,257	177,710	198,547	974,536	1,165,998	(191,462)	ZF
ZN	306,125	364,366	(58,241)	230,074	283,336	(53,262)	1,461,007	1,349,503	111,504	ZN
ZB	126,126	181,853	(55,727)	136,711	174,839	(38,128)	639,244	545,389	93,855	ZB

Week over Week Change

As of	Sml Spec	Lrg Spec	Comm
8/5/2008	Net	Net	Net
ZF	(7,099)	52,562	(45,463)
ZN	41,818	45,805	(87,621)
ZB	2,545	20,079	(22,625)

## Current Positions

Small Spec			Large Spec			Commercials		
Long	Short	Net	Long	Short	Net	Long	Short	Net
1,039,805	976,600	63,205	917,946	370,260	547,686	8,512,585	9,123,477	(610,892)

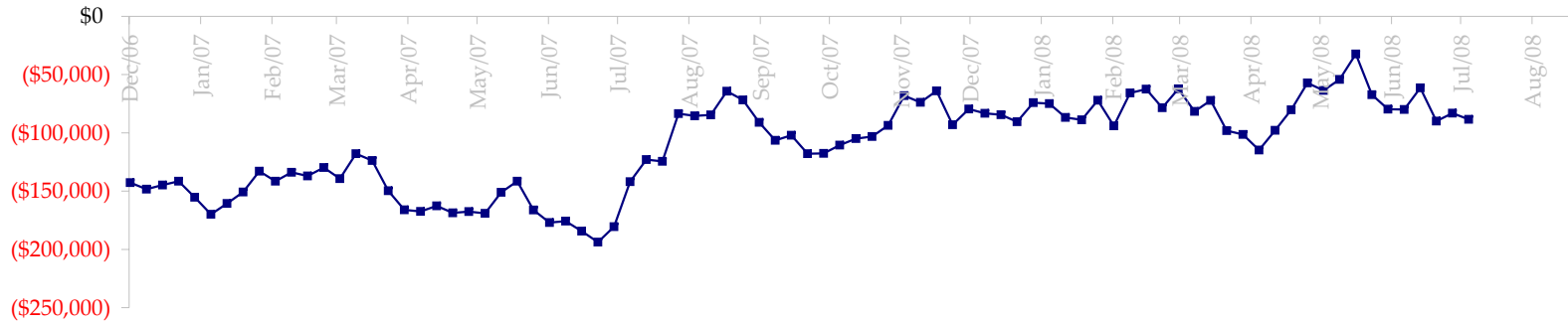
## Week over Week Change

As of

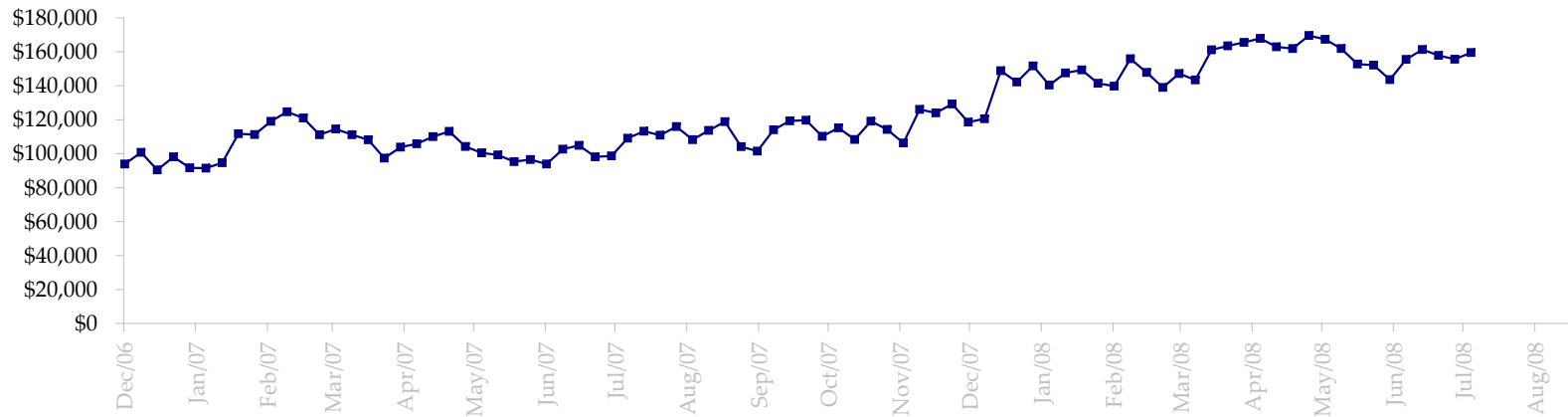
8/5/2008

Sm Spec	Lg Spec	Commrc
(8,338)	50,812	(42,476)

Fed Agency & GSA Position: Coupons - (\$mln)

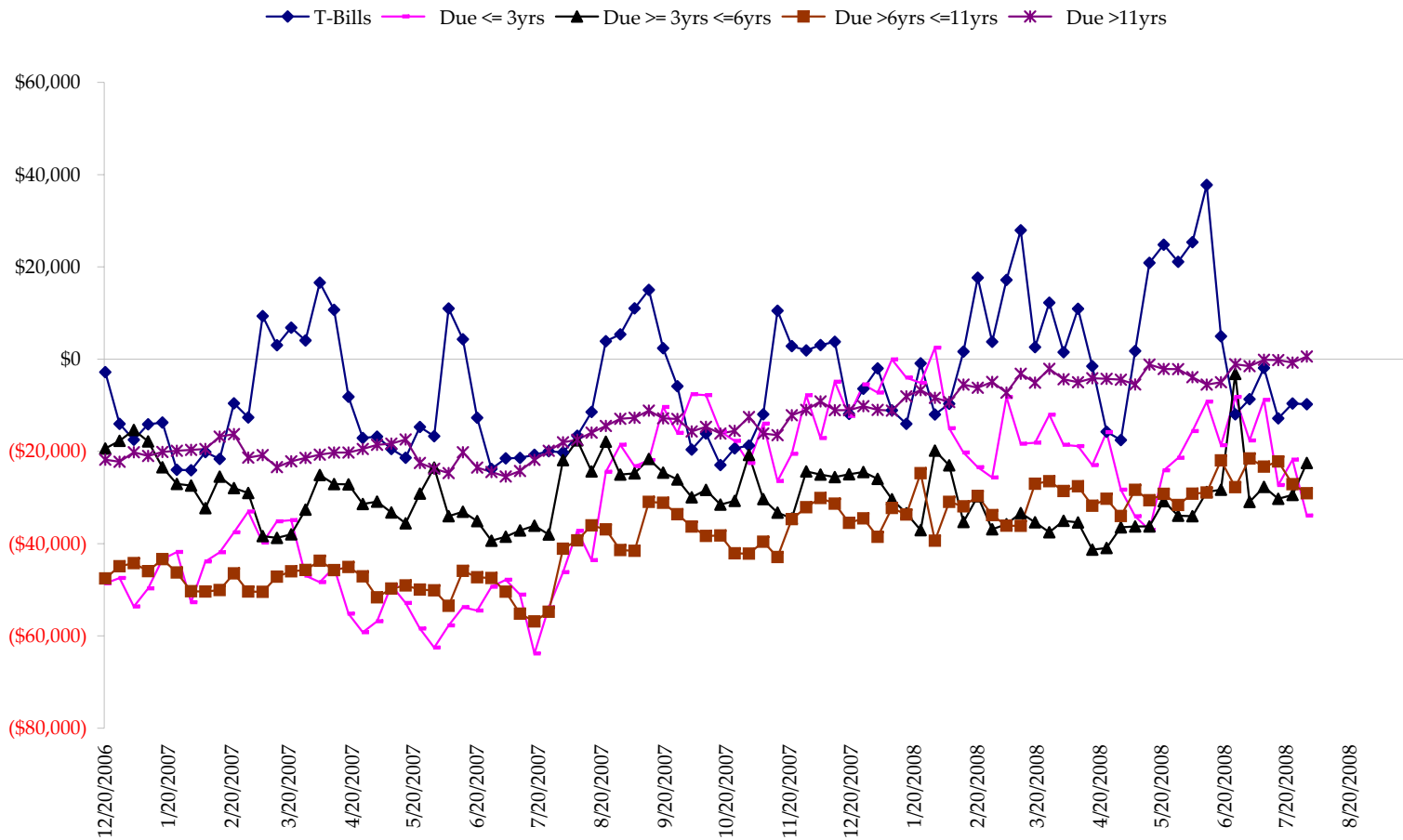


Fed Agency & GSA Position: Coupons - (\$mln)

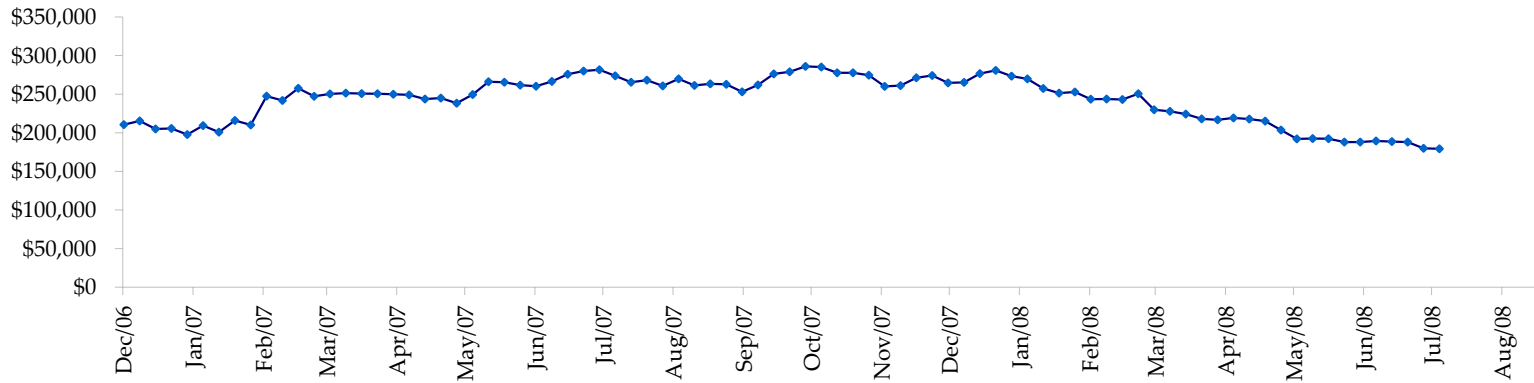


Treasury Coupon Positions by Maturity

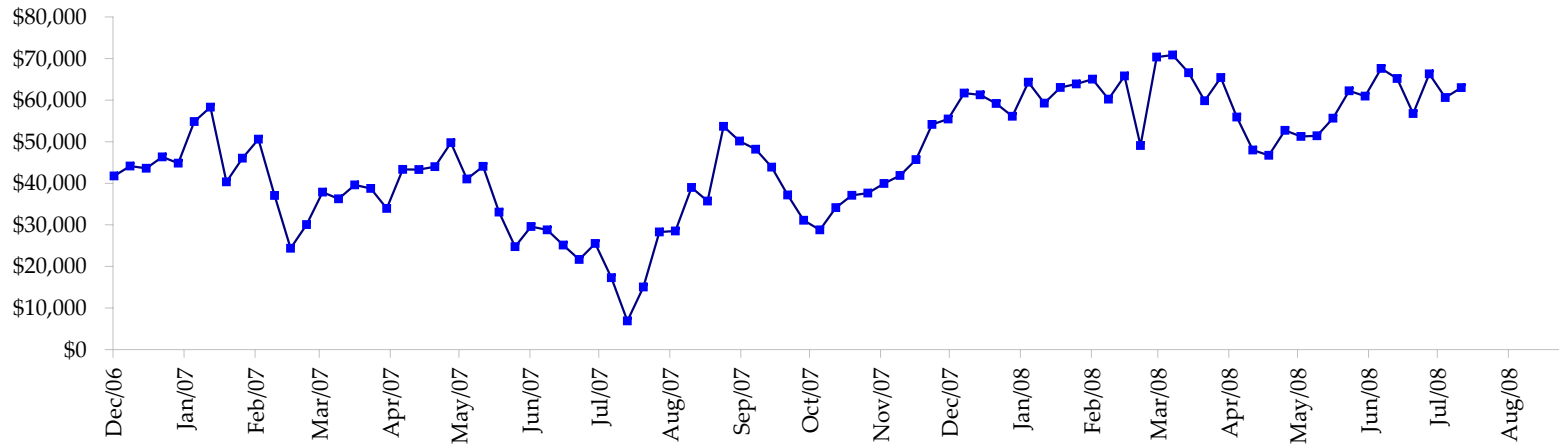
All dates are 'as of'.



Total Corporate Position - (\$mln)



Total Mortgage Position - (\$mln)



We are interested in the last column, CIT % OI. That stands for Commercial Index Traders, percent Open Interest.

This table, compliments of CommitmentofTraders.com

Supplemental Commitments of Traders Report breaking out the Commercial Index Traders (CIT).														
Analysis of open interest -with option deltas- as of 08/05/2008														
Summary prepared by www. Commitments of Traders .com														
Commodity	Small Sp			Large Sp			Commerc			CIT			Total	CIT
	NonRepo			Non Com	- No CIT		Comml	- No CIT		Long	Short	Net	Open	% OI
	Long	Short	Net	Long	Short	Net	Long	Short	Net	Long	Short	Net	Interest	
Wheat	30490	57507	-27017	42643	67702	-25059	36768	155771	-119003	204186	33106	171080	449902	38%
K C Wheat	19232	30528	-11296	13470	10109	3361	29988	46340	-16352	24959	672	24287	105626	22%
Corn	164507	285027	-120520	157644	80328	77316	519026	840585	-321559	414052	49288	364764	1960640	18%
Soybeans	49434	83737	-34303	79361	28882	50479	86592	251867	-165275	161314	12214	149100	547771	27%
Soybean Oil	26032	23554	2478	25234	26396	-1162	101755	168934	-67179	73165	7302	65863	299973	21%
Cotton	20747	16444	4303	31724	36903	-5179	82981	185669	-102688	113065	9501	103564	380635	27%
Lean Hogs	28014	33677	-5663	34386	32551	1835	14959	125599	-110640	116584	2115	114469	264722	43%
Lv Cattle	26568	62249	-35681	50028	48691	1337	32390	146241	-113851	150914	2719	148195	341514	43%
Feeder	5866	15183	-9317	8350	5290	3060	6368	6386	-18	8670	2394	6276	38356	16%
Cocoa	10680	4444	6236	42887	29454	13433	58851	103389	-44538	27801	2931	24870	156327	15%
Sugar No 11	104526	66691	37835	133351	59462	73889	219386	674530	-455144	421192	77772	343420	1152172	29%
Coffee	8203	8190	13	29815	13754	16061	37454	112184	-74730	62631	3976	58655	196805	29%
			-192932			209371			-1590977			1574543	5894443	26%