

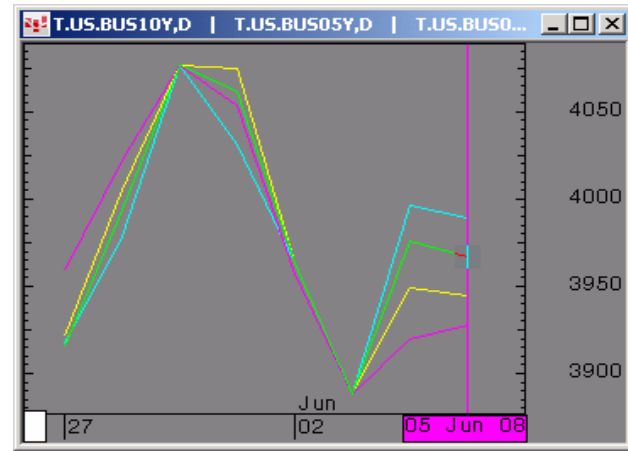


The Morning Email: Treasuries

Table of Contents

- Pg 1** Important Econ Releases, Highs & Lows
- Pg 2** Quotes
- Pg 3** Duration, DV01s, Curve Spreads, CF
- Pg 4** Hedge Ratio's
- Pg 5** Closes: 2pm CT vs this Morning
- Pg 6** Cash Duration Matrix
- Pg 7** Tic for Tic & Box for Box Matrix
- Pg 8** Key Money Rate, Spreads, Swaps, Packs
- Pg 9** Libor, Fed Funds (OIS), Repo, SONIA & EONIA Rates

Daily Yield Curve



} Scale is for 10yr

Source: CQG, Inc. © 2008 Thu Jun 05 2008 05:43:57



Want something added? Let me know: jgoulding@ghco.com

Disclaimer: All information within this newsletter is meant for internal use at GH Trader's LLC, only. All information has been recorded to the best of my ability. This material is based upon information that I consider reliable, but I do not represent that it is accurate or complete.

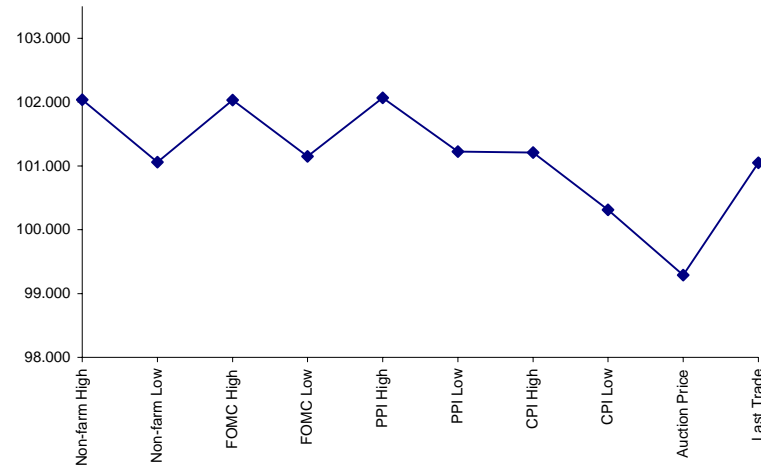
Economic Releases (32nds)

	5y	10y	ZNU8	ZBU8	Date
Non-farm High	102.0350	101.070	114.147	116.232	5/2/2008
Non-farm Low	101.0600	99.270	112.211	114.277	5/2/2008
FOMC High	102.0300	100.275	113.233	115.352	4/20/2008
FOMC Low	101.1500	100.020	112.241	114.267	4/20/2008
PPI High	102.0650	100.265	113.246	116.147	5/20/2008
PPI Low	101.2250	100.060	113.166	115.167	5/20/2008
CPI High	101.2100	100.050	113.167	115.197	5/14/2008
CPI Low	100.3100	99.055	112.177	114.087	5/14/2008
Auction Price	99.2908	99.157	na	na	
Last Trade	101.0470	99.085	113.225	114.045	6/5/2008 5:48

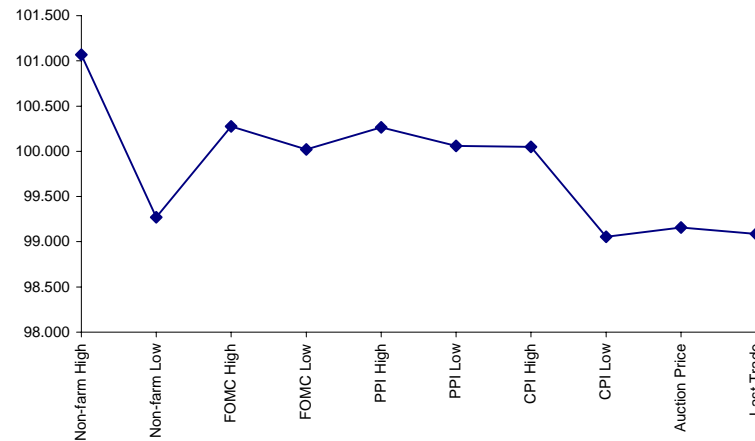
Auctions - 32nds

	2 y	5y	10y	30y
Auction Price	99.311	99.291	99.157	96.120
Auction Yield Stop	2.64	3.52	3.937	4.599
Actual Auction Date	5/28/2008	5/29/2008	5/7/2008	5/8/2008 r

5y (Decimal)



10y (Decimal)



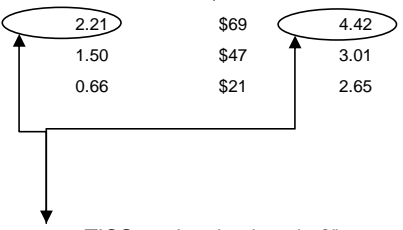
Notes:

- 1) Cash and futures are adjusted for roll.
- 2) Release times are from release to 2pm cdt
- 3) {Jun08 to Sep08 Futures roll: ZF = (-27 3/4); ZN = (-49 1/2); ZB = (-30 1/2) [tics]}

Quotes

		32 nds					
	Last	Net	High	Low	Open	Volume	Sym Name
TUAU8	105.222	(0.027)	105.247	105.205	105.230	23,117	2y Fut
FVAU8	110.242	(0.050)	110.260	110.185	110.230	55,117	5y Fut
TYAU8	113.225	(0.070)	113.265	113.135	113.230	127,217	10y Fut
USAU8	114.045	(0.07)	114.075	113.255	114.025	17,380	30y Fut
	Last	Net	High	Low	Open	Volume	Sym Name
BUS02P	100.102	(0.005)	100.122	100.087	100.115	na	2y Cash
BUS05P	101.045	0.015	101.062	100.317	101.047	na	5y Cash
BUS10P	99.080	0.030	99.100	99.005	99.070	na	10y Cash
BUS30P	94.290	0.020	94.315	94.180	94.270	na	30y Cash
	Last	Net	High	Low	Open	Volume	Sym Name
BUS02Y	2.455	0.012	2.492	2.419	2.463	na	2y Yield
BUS05Y	3.249	(0.007)	3.286	3.233	3.267	na	5y Yield
BUS10Y	3.965	(0.011)	4	3.957	3.976	na	10y Yield
BUS30Y	4.689	(0.006)	4.723	4.684	4.697	na	30y Yield

	M Duration	DV01 32	DV01 \$	DV01 Box	CF	
30y	15.94	4.91	\$1,535	9.82	n/a	30y
10y	8.16	2.60	\$811	5.19	n/a	10y
5y	4.54	1.50	\$469	6.00	n/a	5y
2y	1.92	0.62	\$193	2.47	n/a	2y
ZB	10.30	3.87	\$121	3.87	0.7771	ZB
ZN	6.00	2.21	\$69	4.42	0.8478	ZN
ZF	4.13	1.50	\$47	3.01	0.8995	ZF
ZT	1.92	0.66	\$21	2.65	0.9397	ZT



DV01 32, said differently, is "how many TICS are in a basis point?".

Example, If **ZN** moves 1~basis point, then, it's moved 2.59 tics (Today, 03/29/08, the value in the box is 2.59).

Since ZN trades in half tics, then, 5.17 boxes = 1 basis point in ZN. (Again, today, 03/28/08, the value in the box is 5.17). Of course the values will be different as you look at this. But, they won't be that much different. So, I think you can get the idea I'm trying to get across.

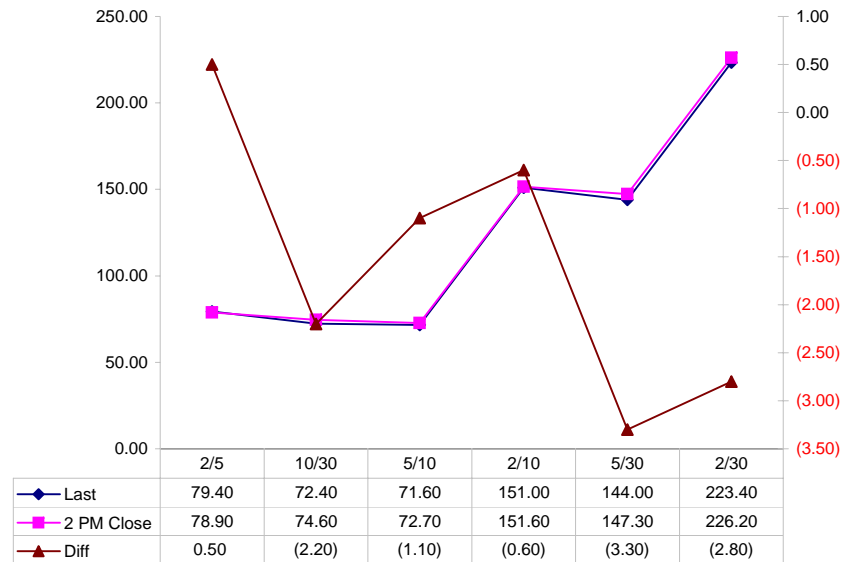
Notes

- CF = Conversion Factor
- MDuration = Modified Macaulay Duration
- MDuration & DV01s for Futures are based on proxy issue (CTD)
- DV01 Box = Dollar Value of 1 basis point move per Box

Yield Curve Spreads

	Last	2pm close	Diff
2/5	79.40	78.90	0.50
10/30	72.40	74.60	(2.20)
5/10	71.60	72.70	(1.10)
2/10	151.00	151.60	(0.60)
5/30	144.00	147.30	(3.30)
2/30	223.40	226.20	(2.80)

Curve Spreads vs 2pm close



US Financial Futures / Eurex Bond

	ZB	ZN	ZF	ZT
Bund (M)	1.033	1.818	2.700	2.983
Bobl (M)	0.563	0.990	1.476	1.626
Shatz (M)	0.224	0.393	0.586	0.646

US Financial Futures

	ZB	ZN	ZF	ZT
ZB		1.750	2.569	2.914
ZN	0.572		1.469	1.666
ZF	0.389	0.681		1.134
ZT	0.343	0.600	0.882	

Eurex Bonds

	Bund (H)	Bobl (H)	Shatz (H)
Bund (H)		1.8	4.6
Bobl (H)	0.5		2.5
Shatz (H)	0.2	0.4	

US Treasuries v US Financial Futures

	2y	5y	10y	30y
ZB	1.60	3.88	6.46	12.70
ZN	2.79	6.79	11.31	22.22
ZF	4.10	9.97	16.61	32.63
ZT	4.65	11.31	18.83	37.01

US Treasuries v Eurex Bonds

	2y	5y	10y	30y
Bund (M)	1.5	3.6	6.5	12.2
Bobl (M)	2.8	6.5	11.9	22.4
Shatz (M)	7.2	16.0	29.8	56.3

US Treasuries

	2y	5y	10y	30y
2y		2.431	4.049	7.958
5y	0.428		1.733	3.406
10y	0.247	0.600		1.965
30y	0.126	0.305	0.509	

Note: If you are looking at a matrix with Eurex products then those ratios are pulled from Bloomberg and are static. Meaning, I only update them once in a while but always on rolls. I calculate the other matrixes, with US products, everyday

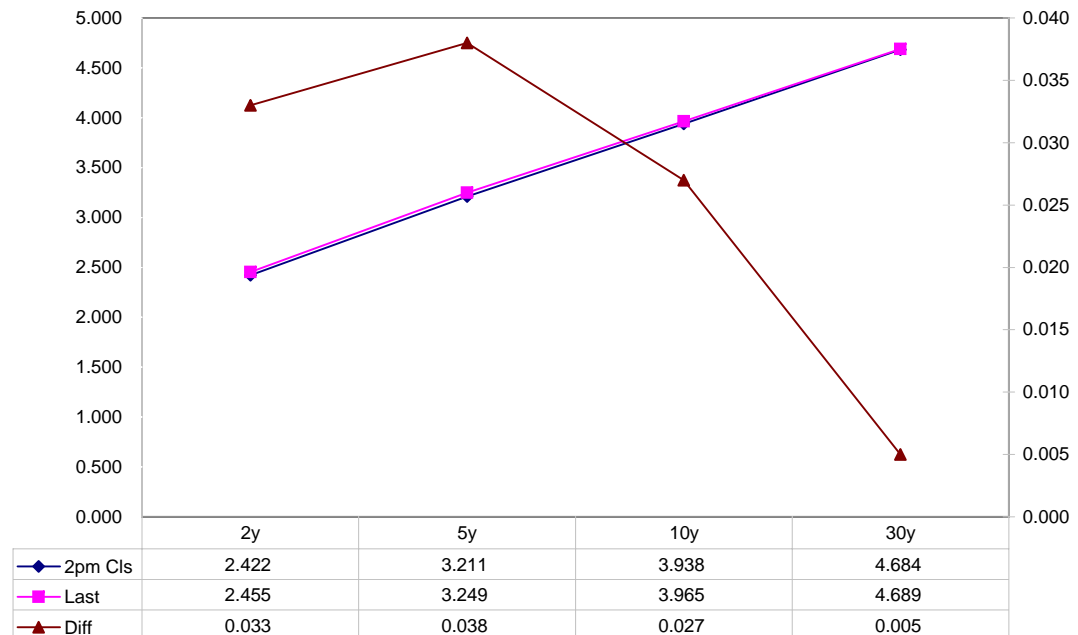
Closes: 2pm CT vs this Morning

	Cpn	Mty	Close 32	Close	Last	Diff	Basis			Close 32	Last	
							Close	Last	Roll			
2y	2.625	5/31/10	100.1250	2.422	2.455	0.033	32.25	32.25		105.2475	105.2220	TUAU8
5y	3.500	5/31/13	101.1025	3.211	3.249	0.038	49.70	48.69		110.2925	110.2420	FVAU8
10y	3.875	5/15/18	99.155	3.938	3.965	0.027	92.85	91.78		113.295	113.225	TYAU8
30y	4.375	5/15/37	95.020	4.684	4.689	0.005	198.20	200.14		114.115	114.045	USAU8

Curve Spreads

	Close bps	Last bps
2/5	78.9	79.4
5/10	72.7	71.6
10/30	74.6	72.4
2/10	151.6	151.0
5/30	147.3	144.0
2/30	226.2	223.4

US Treasuries Last v 2pm Close



Notes:

Basis = (Cash Decimal - (Futures Decimal * CF))*32

MDuration for Curve Spreads:

Longer duration minus shorter duration

32 = price is quoted in 32nds

Cash Duration Matrix

	2	5	10	30
2	100%			
5	42%	100%		
10	24%	56%	100%	
30	12%	28%	51%	100%

What is this? (1):
 2yr cash has X% duration of 5yr cash .

Cash Matrix [DV01 x Duration]

	2	5	10	30
2	\$193			
5	\$198	\$469		
10	\$191	\$452	\$811	
30	\$185	\$437	\$785	\$1,535

What is this? (2):
 - 2yr cash has DV01 of X\$
 - Multiply the 2yr DV01 by the percent duration to come up with what the 2yrs DV01 SHOULD be compared to the 5yr.

Cash Matrix [DV01 over / (under) valued]

	2	5	10	30
2				
5	(\$5)			
10	\$2	\$17		
30	\$8	\$32	\$26	

What is this? (3):
 - Now you can see the over/under value, based on the DV01, from contract to contract. In this example we are looking at the 2yr compared to the 5yr.

Cash Matrix [DV01 over / (under) as %]

	2	5	10	30
2				
5	-2.75%			
10	0.86%	3.71%		
30	4.26%	7.21%	3.37%	

Or you can look at the over/under value as a percentage instead of dollar terms.

Tic for Tic Matrix

	2y	5y	10y	30y
ZT	0.93	2.26	3.91	7.40
ZF	0.41	1.00	1.73	3.26
ZN	0.28	0.68	1.18	2.22
ZB	0.16	0.39	0.67	1.27

	2y	5y	10y	30y
2y		2.43	4.21	7.96
5y	0.41		1.73	3.27
10y	0.24	0.58		1.89
30y	0.13	0.31	0.53	

	ZT	ZF	ZN	ZB
ZT		2.27	3.33	5.83
ZF	0.44		1.47	2.57
ZN	0.30	0.68		1.75
ZB	0.17	0.39	0.57	

Box for Box Matrix

	2y	5y	10y	30y
ZT	0.93	2.26	7.83	14.80
ZF	0.41	1.00	3.45	6.53
ZN	0.56	1.36	1.18	2.22
ZB	0.64	0.78	1.34	1.27

	2y	5y	10y	30y
2y		2.43	2.10	3.98
5y	0.41		0.43	1.64
10y	0.48	2.31		1.89
30y	0.25	0.61	0.53	

	ZT	ZF	ZN	ZB
ZT		2.27	6.66	11.66
ZF	0.44		1.47	5.14
ZN	0.15	0.68		1.75
ZB	0.09	0.19	0.57	

	Libor\$ ¹	Repo Rt ⁶			
0/N	2.125	2.020			
1week	2.353	1.950			
2week	2.401	1.950			
	Libor\$ ¹	Tbill	CP ²		
1M	2.448	1.837	2.490		
3M	2.677	1.843	2.630		
6M	2.919	1.973	2.830		
	TSY	Swp	Swp Rate ⁵	ED Pks ³	TSY - ED Pk ⁴
2y	2.454	86.75	3.32	3.762	1.308
5y	3.248	85.75	4.11	4.887	1.639
10y	3.965	69.25	4.66	#VALUE!	#VALUE!

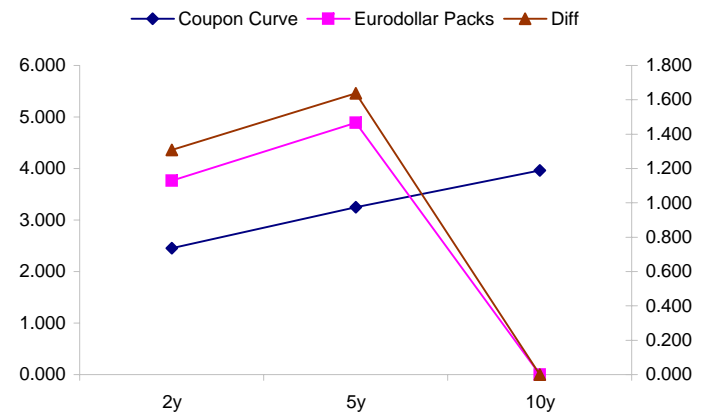
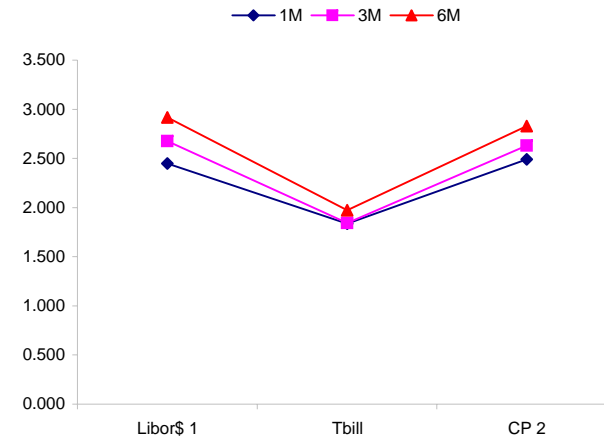
<u>2/5</u>	<u>Rd/Blu Pk</u>	<u>Diff</u>
79.4	112.5	33.0
<u>2/10</u>	<u>Rd/Gld Pk</u>	<u>Diff</u>
151.1	#VALUE!	#VALUE!
<u>5/10</u>	<u>Blu/Gld Pk</u>	<u>Diff</u>
71.7	#VALUE!	#VALUE!

Red pack / Blue pack is a 2/5 proxy
 Red pack / Gold pack is a 2/10 proxy
 Blue pack / Gold pack is a 5/10 proxy

"Swap spreads are essentially a measure of the difference between buying a safe government bond and making a riskier loan to a bank"
 --WSJ

Notes:

- 1) Quoted in US Dollars
- 2) CP = Commercial Paper
- 3) ED Pks are colored for pack identifications. Example, the red pack is a 2-yr proxy and is colored red.
- 4) TSY yield minus ED Pk yield
- 5) Swap divided by 100 + TSY yield gives swap rate in basis points.
- 6) Repo Rt quotes is for overnight General Collateral



	Last	Chng	Term	Asset Type
USDLIBON	2.125	(0.0913)	Overnight	LIBOR
TUSFFRON	2.000	0.0000	Overnight	Fed Funds Effective Rate
TUSRPOON	2.020	0.0000	Overnight	Repo Rate
TEONIA01M	4.026	0.0120	1 month	Euribor OIS Rate
TEONIA03M	4.081	0.0110	3 month	Euribor OIS Rate
TSONIA01M	5.031	(0.0070)	1 month	Sterling OIS Rate
TSONIA03M	5.057	(0.0060)	3 month	Sterling OIS Rate
TUSOIS01M	2.011	0.0070	1 month	USD OIS Rate
TUSOIS03M	2.006	0.0030	3 month	USD OIS Rate

